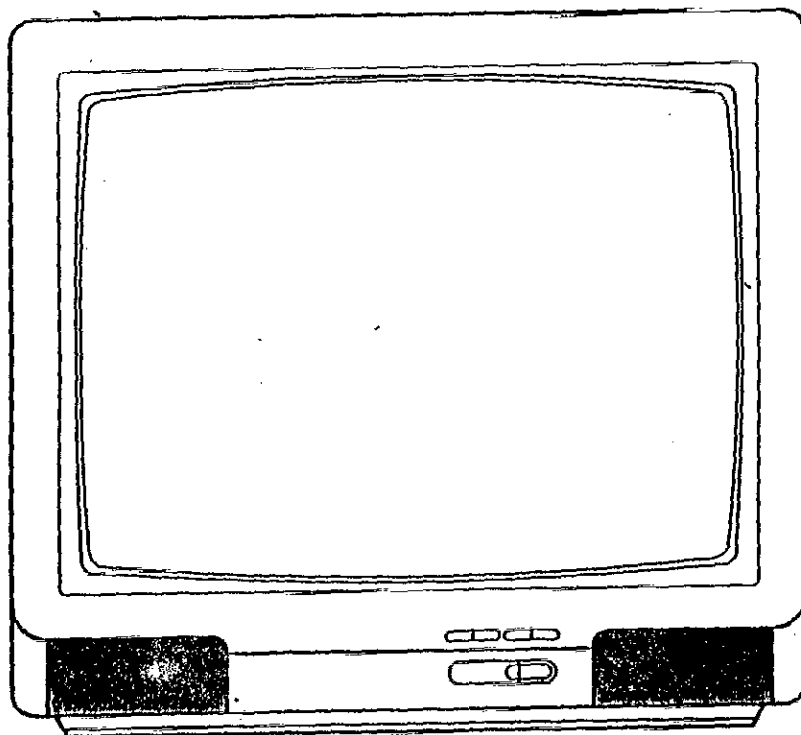


# SERVICE MANUAL

## SOLID STATE 20" Color Television Receiver



**MODEL : GT-9320CZ**

PAL - BG

FTZ W/ FASTEXT

GERMAN STEREO

PHILIPS IC

*CT-m 487*

SPECIFICATION

|                         |            |                      |   |       |         |     |
|-------------------------|------------|----------------------|---|-------|---------|-----|
| SYSTEM                  | :          | PAL- B/G             |   |       |         |     |
|                         |            | ---- TV SECTION ---- |   | CATV. |         |     |
| CHANNEL COVERAGE        | VHF LOW    | :                    | 2-4                                       | CH.   | Y-S1    | CH. |
|                         | VHF HIGH   | :                    | 5-12                                      | CH.   | S2-S20  | CH. |
|                         | UHF        | :                    | 21-69                                     | CH.   |         |     |
| FREQUENCY RANGE         | VHF LOW    | :                    | 47-68                                     | MHz   | 75-111  | MHz |
|                         | VHF HIGH   | :                    | 174-230                                   | MHz   | 111-300 | MHz |
|                         | UHF        | :                    | 470-862                                   | MHz   |         |     |
| VISION/SOUND SEPARATION |            | :                    | 5.5                                       | MHz   |         |     |
| FREQUENCY VIDEO IF      |            | :                    | 38.9                                      | MHz   |         |     |
|                         | SOUND IF   | :                    | 33.4                                      | MHz   |         |     |
| STEREO SENSITIVITY      |            | :                    | 45  | dBuV  |         |     |
| SENSITIVITY             | VHF LOW    | :                    | 47  | dBuV  |         |     |
| (AT 30dB S/N)           | VHF HIGH   | :                    | 47  | dBuV  |         |     |
|                         | UHF        | :                    | 50  | dBuV  |         |     |
| SCANNING LINES          |            | :                    | 625                                       | lines |         |     |
|                         | HORIZONTAL | :                    | 15625                                     | Hz    |         |     |
|                         | VERTICAL   | :                    | 50  | Hz    |         |     |
| OUTPUT POWER MAXIMUM    |            | :                    | 1800                                      | mW    |         |     |
|                         | 10% THD    | :                    | 1300                                      | mW    |         |     |
| C R T .                 |            | :                    | 20" DIAGONAL, 90 DEGREES DEFLECTION ANGLE |       |         |     |
| SPEAKER                 |            | :                    | 2" x 3 - 1/2" 16 OHM 3W                   |       |         |     |
| ANTENNAL EXTERNAL       |            | :                    | 75  | OHM   |         |     |
| POWER CONSUMPTION       |            | :                    |   |       |         |     |

## VIF ALIGNMENT

### A. Preparation Step (See Fig. 1)

- (i) Connect AGC bias voltage to pin 10 at IC102, the DC Supply should be turned off this time.
- (ii) Connect 14V B+ bias voltage to D404 (-) and Ground.
- (iii) Connect 14V B+ bias voltage to c917 (+) and ground.
- (iv) Connect sweep generator to tuner test point and Ground.

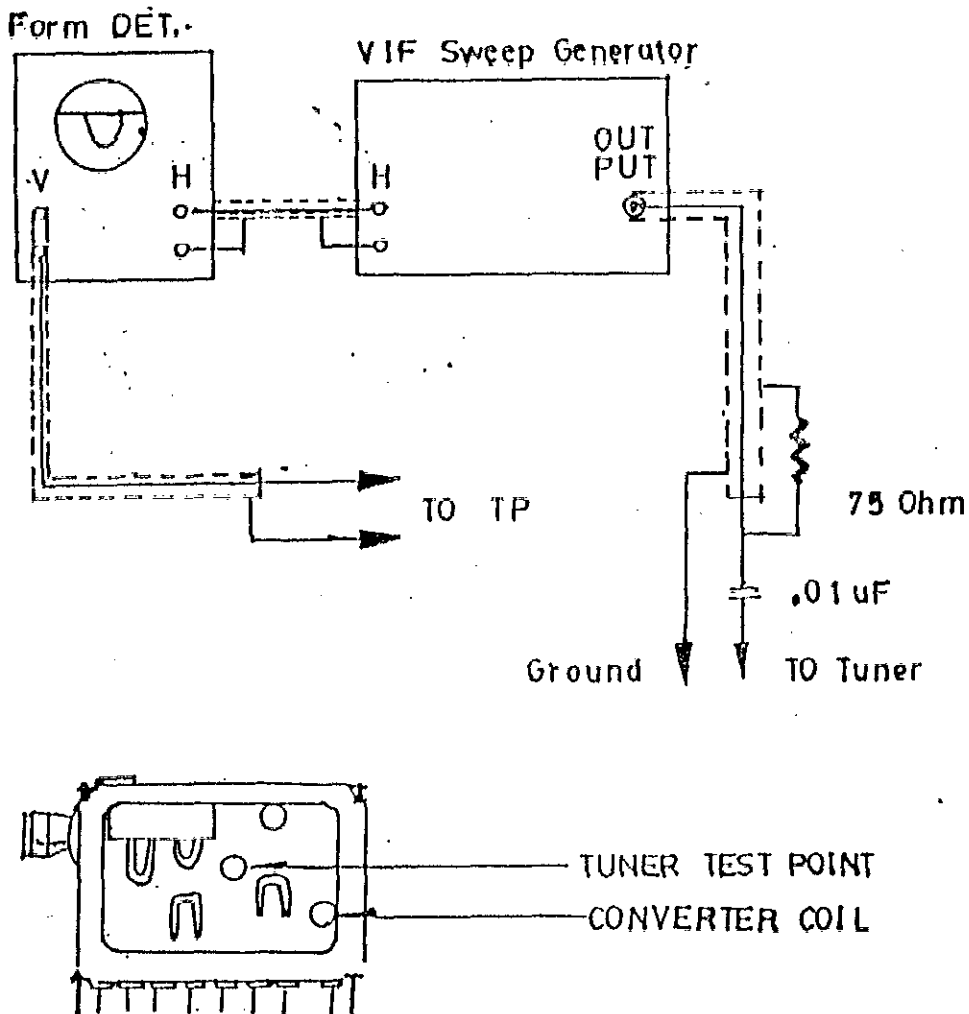


Fig. 1

B. Tank Coil Alignment Step (See Fig. 2)

- (i) Calibrate the Division of waveform Detector equal to 1V per div.
- (ii) The output of sweep generator should be -50dB.
- (iii) Connect the waveform detector between TP106 and ground.
- (iv) Connect a 47K Resistor between pin 7 to pin 22 at IC102.
- (v) Connect a 4K7 Resistor between pin 23 to Ground at IC102.
- (vi) Adjust AGC bias until the waveform just saturate.
- (vii) Adjust T101 to obtain the waveform as Fig.2.

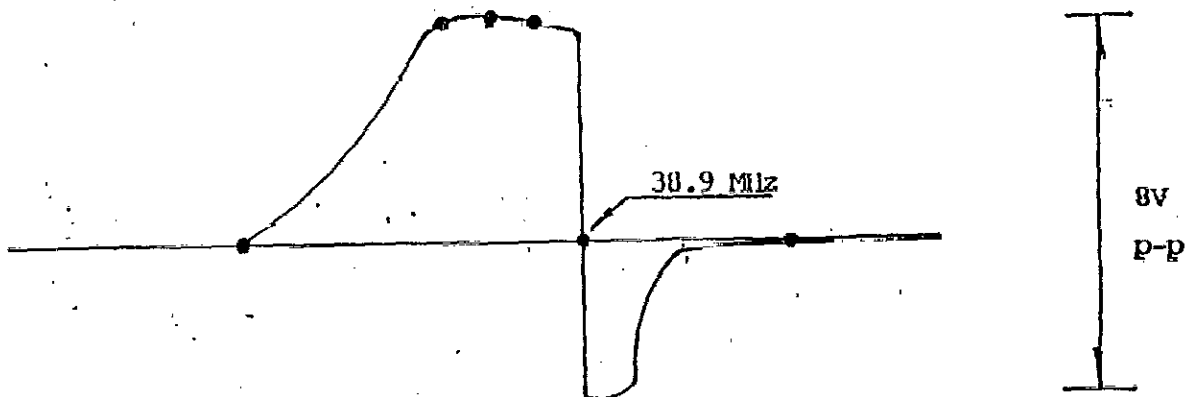


Fig. 2

(C) VIF ALIGNMENT

- (1) Connect waveform detector to TP102 and Ground.
- (ii) Connect 100 ohm resistor between TP103 and TP104.
- (iii) Reduce output level of sweep generator to -50dB.
- (iv) Adjust AGC bias to maintain the waveform achieve 1V p-p.
- (V) Adjust tuner convertor coil to obtain the waveform as Fig.3.

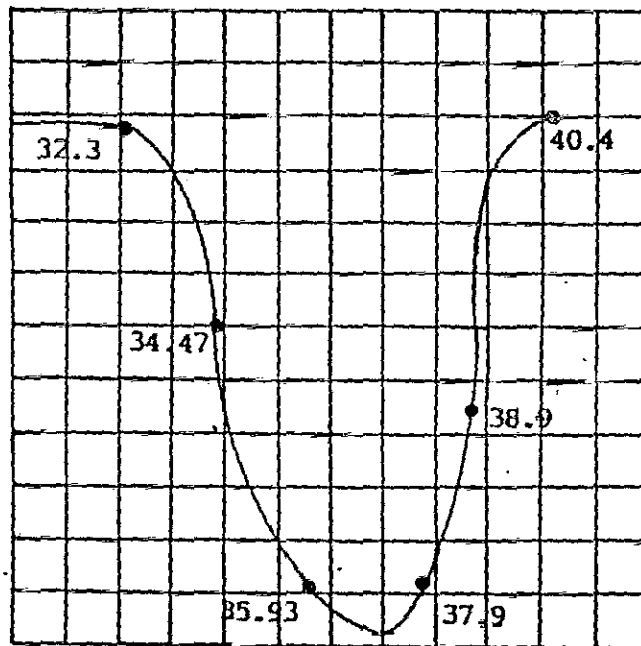


Fig. 3 .

F. SIF ALIGNMENT

- (i) Connect the sweep generator to TP105.
- (ii) Connect waveform detect to PIN 1 and PIN 3 at CN306.
- (iii) Connect AGC Bias voltage to TP101.
- (iv) The output of sweep generator should be -40dB.
- (v) Adjust T104 and T102 to obtain the waveform as Fig.5.

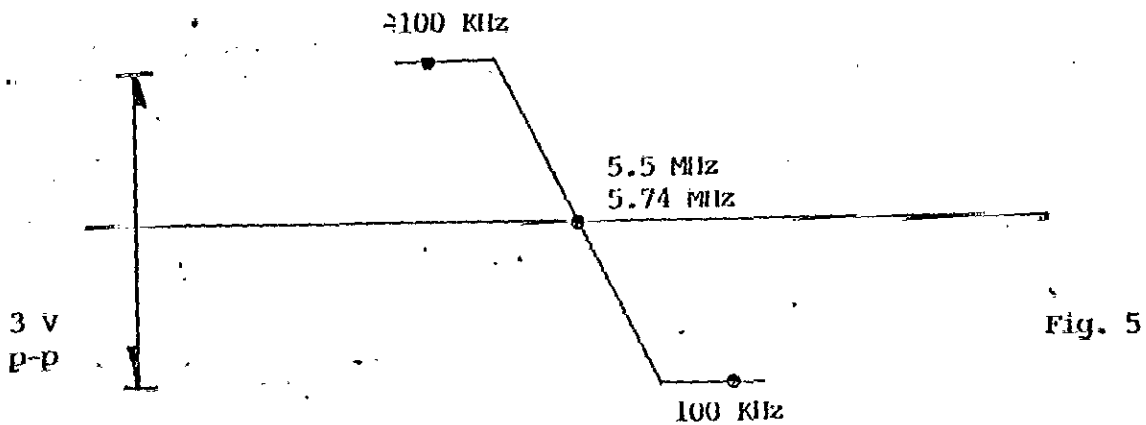


Fig. 5

## PAL COLOUR ALIGNMENT

- (1) Receive Philips Pattern.
- (2) Connect Oscilloscope to TP304.
- (3) Set color control to maximum position.
- (4) Adjust T301, and VR302 to obtain the waveform as Fig.6.

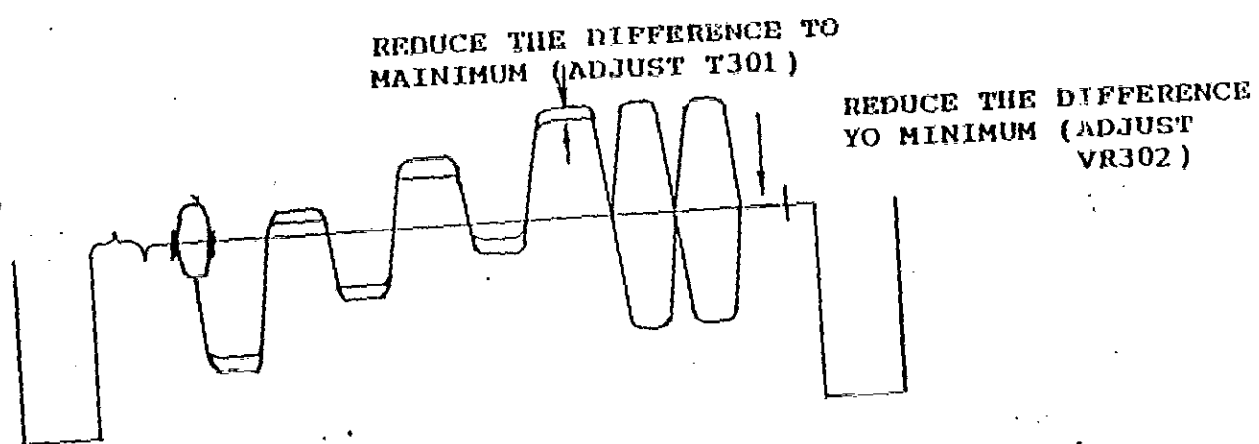


Fig.6

## G. STEREO and Dual Sound Alignment

- (1) Receive color bar pattern (with stereo and Dual Sound).
- (2) Connect oscilloscope to TP001 and TP002.
- (3) Adjust T001, VR001 and VR003 to obtain a maximum amplitude as Fig.6 & Fig. 7.

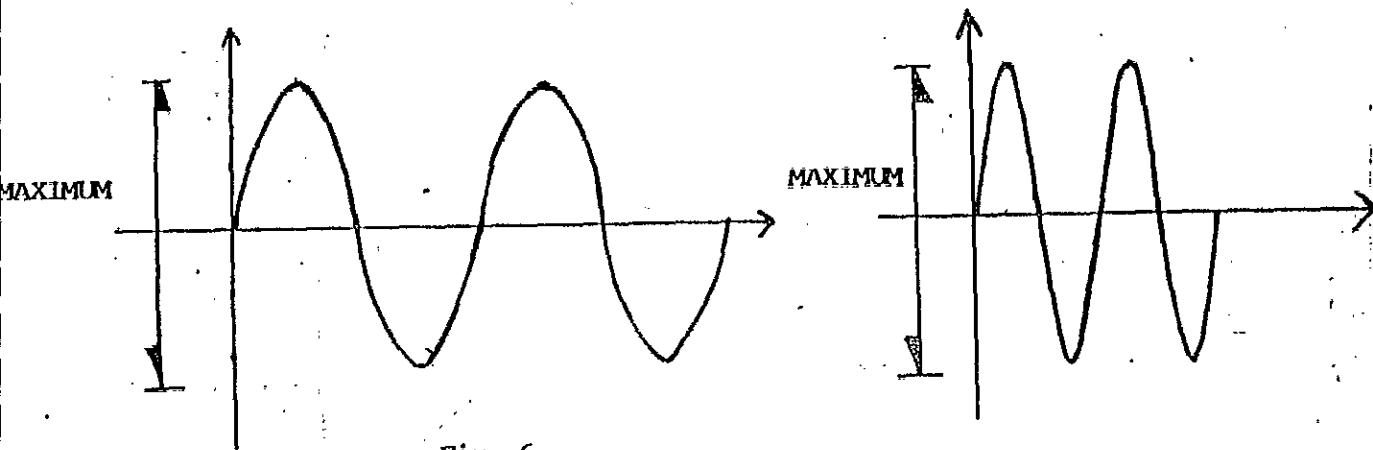


Fig. 6

## II. Separation Alignment

- (1) Receive color bar pattern (with stereo sound, L 3 KHz R 1 KHz).
- (2) Connect Digital multimeter to PIN 1 at CN201 and ground.
- (3) Adjust volume control to obtain a 0.89 Vrms.
- (4) Switch off the left channel signal (3 KHz) from the signal generator.
- (5) Adjust VR002 to make a minimum output level.



#### B+ ADJUSTMENT

- 1) Connect a digital volt meter to TPB+ and ground.
- 2) Set Brightness, contrast and colour to minimum.
- 3) Adjust VR901 and obtain a reading of 112v.

#### HORIZONTAL CIRCUIT ADJUSTMENT

- 1) Receive Monoscope Pattern input signal 80dBuV.
- 2) Connect terminal 25 pin of IC102 and the ground with the Elect.Cap. 10/16
- 3) Adjust VR103 to obtain the picture running at center.
- 4) Adjust VR102 to obtain the picture at center.

#### VERTICAL CIRCUIT ADJUSTMENT

- 1) Receive the Monoscope Pattern.
- 2) Adjust V-size (VR401) to obtain a normal picture.

#### WHITE BALANCE ALIGNMENT STEP

(de-guss the picture by deguassing coil if necessary)

- 1) Turn the brightness, contrast and picture control to minimum value.
- 2) Turn VR501,502,504 to middle position. Turn VR503,505 to middle position.
- 3) Turn VR301 to middle position.
- 4) Receive a black and white pattern.
- 5) Connect a digital meter between G2 and Ground on CRT Board.
- 6) Adjust screen volume on FBI to obtain a 310V.
- 7) Adjust VR502,503,504,505 to obtain a uniformly white picture (9300°K)

#### SUB-BRIGHTNESS ALIGNMENT

- 1) Receive a colour bar pattern.
- 2) Turn the brightness, contrast and colour to minimum.
- 3) Adjust VR301 until the brightest bar can just be seen.

#### FOCUS ALIGNMENT

- 1) Set the brightness and contrast to middle position.
- 2) Receive a monoscope pattern.
- 3) Adjust focus control to obtain sharpest picture.

#### AGC ALIGNMENT

- 1) Receive C169 (UIIF) and input field strength in 63dB ±3dB input.
- 2) Adjust VR101 to the point where noise is disappeared.

VOLTAGE TABLE FOR IC

| SYMBOL.<br>PIN NO. | IC305<br>(V) | IC303<br>(V) | IC901<br>(V) | IC401<br>(V) | IC201<br>(V) |
|--------------------|--------------|--------------|--------------|--------------|--------------|
| 1                  | 7.4          | 5.1          | 10.6         | 1.2          | 1.2          |
| 2                  | 7.4          | 0            | GND          | GND          | 0.01         |
| 3                  | GND          | 3.8          | 5            | 1.3          | GND          |
| 4                  | 2.2          | 0            |              | GND          | 15.3         |
| 5                  | 2.3          | 3.9          |              | 12.6         | 0.01         |
| 6                  | 8.0          | 3.5          |              | 25           | 1.2          |
| 7                  | 11.4         | GND          |              | NC           | 16.2         |
| 8                  | 5.6          | GND          |              | 5.7          | 7.8          |
| 9                  | 3.2          | 3.3          |              | 24.6         | 15.2         |
| 10                 | 7.8          | 3.8          |              |              | 7.8          |
| 11                 | 2.9          | 0.8          |              |              | 16.2         |
| 12                 | 7.6          | 5.1          |              |              | GND          |
| 13                 | 2.1          | 5.1          |              |              |              |
| 14                 | 7.1          | NC           |              |              |              |
| 15                 | 0.9          | 4.4          |              |              |              |
| 16                 | NC           | 9.8          |              |              |              |
| 17                 |              | 3.4          |              |              |              |
| 18                 |              | 9.5          |              |              |              |
| 19                 |              | NC           |              |              |              |
| 20                 |              | 3.1          |              |              |              |
| 21                 |              | NC           |              |              |              |
| 22                 |              | 4.4          |              |              |              |
| 23                 |              | GND          |              |              |              |
| 24                 |              | 5.1          |              |              |              |

NOTE : VOLTAGE ARE TAKEN UNDER TUNED CONDITION WITH

- CONTRAST : Maximum Position
- BRIGHTNESS : Maximum Position
- COLOR : Maximum Position
- SIGNAL INPUT : 80 dBV
- CHANNEL SETTING : The Last Channel of UHF High
- SIGNAL PATTERN : Colour Bar

VOLTAGE TABLE FOR IC

| SYMBOL<br>PIN NO. | IC001<br>(V) | IC002<br>(V) |  |  |  |
|-------------------|--------------|--------------|--|--|--|
| 1                 | 5.6          | NC           |  |  |  |
| 2                 | 5.6          | NC           |  |  |  |
| 3                 | 7.4          | NC           |  |  |  |
| 4                 | 11.1         | NC           |  |  |  |
| 5                 | 7.3          | NC           |  |  |  |
| 6                 | 7.3          | GND          |  |  |  |
| 7                 | 7.3          | GND          |  |  |  |
| 8                 | 7.3          | GND          |  |  |  |
| 9                 | 0.06         | 9.3          |  |  |  |
| 10                | NC           | 9.3          |  |  |  |
| 11                | 5.6          | GND          |  |  |  |
| 12                | GND          | GND          |  |  |  |
| 13                | 11.2         | 0.01         |  |  |  |
| 14                | 9.2          | 11.2         |  |  |  |
| 15                | 9.2          | 11.2         |  |  |  |
| 16                | GND          | 11.2         |  |  |  |
| 17                | 5.0          |              |  |  |  |
| 18                | GND          |              |  |  |  |
| 19                | 5.0          |              |  |  |  |
| 20                | NC           |              |  |  |  |
| 21                | NC           |              |  |  |  |
| 22                | 5.5          |              |  |  |  |
| 23                | 5.5          |              |  |  |  |
| 24                | 5.5          |              |  |  |  |
| 25                | 5.5          |              |  |  |  |
| 26                | 5.5          |              |  |  |  |
| 27                | 5.5          |              |  |  |  |
| 28                | 7.2          |              |  |  |  |

NOTE : VOLTAGE ARE TAKEN UNDER TUNED CONDITION WITH

- CONTRAST : Maximum Position
- BRIGHTNESS : Maximum Position
- COLOR : Maximum Position
- SIGNAL INPUT : 80 dBV
- CHANNEL SETTING : The Last Channel of UHF High
- SIGNAL PATTERN : Colour Bar

VOLTAGE TABLE FOR IC

| SYMBOL<br>PIN NO. | IC601<br>(V) | IC102<br>(V) | IC302<br>(V) | IC304<br>(V) | IC301<br>(V) |
|-------------------|--------------|--------------|--------------|--------------|--------------|
| 1                 | 4.49         | 5.4          | 3.6          | 3.5          | 0.01         |
| 2                 | 0.16         | 2.4          | GEN          | 11.7         | 0            |
| 3                 | 4.9          | 2.8          | 3.6          | 8.3          | 0            |
| 4                 | 4.9          | 3.2          | 3.6          | 8.4          | 0            |
| 5                 | 4.9          | 3.7          | 3.6          | 8.0          | 0            |
| 6                 | NC           | GEN          | 3.6          | 0.9          | 0            |
| 7                 | 0            | 11.8         | 3.6          | 0.1          | 0            |
| 8                 | 5.0          | 3.4          | 0            | 4.1          | 0            |
| 9                 | 2.0          | 3.4          | 0.14         | 4.3          | 0            |
| 10                | 0.57         | 3.3          | 0.02         | 4.1          | GEN          |
| 11                | GEN          | 1.8          | 3            | 2.8          | 2.3          |
| 12                | 4.16         | NC           | 0.02         | 4.9          | 0            |
| 13                | 5            | 3            | 3            | NC           | 2.3          |
| 14                | 5            | 1.4          | 12           | 4.1          | 0            |
| 15                | 5            | NC           | 0.02         | 0.7          | 2.3          |
| 16                | 5            | GEN          | 2.9          | 2.3          | 0            |
| 17                | 5            | 4            |              | 2.2          | 0.01         |
| 18                | 0.1          | 6.5          |              | GEN          | 0            |
| 19                | 5            | 5.1          |              | 3.5          | 0.01         |
| 20                | 5            | 7.2          |              | 3.5          | 5            |
| 21                | GEN          | 7.2          |              |              |              |
| 22                | 0            | 10           |              |              |              |
| 23                | 0            | 2.6          |              |              |              |
| 24                | 0            | 2.6          |              |              |              |
| 25                | 0            | 5.3          |              |              |              |
| 26                | 0.4          | 0.8          |              |              |              |
| 27                | -0.24        | 0.9          |              |              |              |
| 28                | 5            | 3.1          |              |              |              |
| 29                | 4.9          |              |              |              |              |
| 30                | GEN          |              |              |              |              |
| 31                | 2.48         |              |              |              |              |
| 32                | 2.1          |              |              |              |              |
| 33                | 5            |              |              |              |              |
| 34                | 4.96         |              |              |              |              |
| 35                | 4.9          |              |              |              |              |
| 36                | 0.2          |              |              |              |              |
| 37                | 0.02         |              |              |              |              |
| 38                | GEN          |              |              |              |              |
| 39                | 3.16         |              |              |              |              |
| 40                | 2.8          |              |              |              |              |
| 41                | 0.16         |              |              |              |              |
| 42                | 5            |              |              |              |              |

NOTE : VOLTAGE ARE TAKEN UNDER TUNED CONDITION WITH

- CONTRAST : Maximum Position
- BRIGHTNESS : Maximum Position
- COLOR : Maximum Position
- SIGNAL INPUT : 80 dBuV
- CHANNEL SETTING : The Last Channel of UHF High
- SIGNAL PATTERN : Colour Bar

VOLTAGE TABLE FOR IC

| SYMBOL<br>PIN NO. | IC701<br>(V) | IC602<br>(V) | IC101<br>(V) | IC103<br>(V) | IC802<br>(V) |
|-------------------|--------------|--------------|--------------|--------------|--------------|
| 1                 | 3.0          | GND          | 1.8          | 15.5         | NC           |
| 2                 | 3            | 5            | 2.1          | GND          | 4.2          |
| 3                 | 0            | GND          | 2.6          | 11.9         | 2.2          |
| 4                 | NC           | GND          | 1.8          |              | 2.2          |
| 5                 | NC           | 2.9          | 1.8          |              | 3.8          |
| 6                 | NC           | 3.3          | 2.1          |              | 1.3          |
| 7                 | 0            | 5            | 2.1          |              | 1.2          |
| 8                 | NC           | 5            | 1.8          |              | 3.6          |
| 9                 | 0            |              | 1.8          |              | 3.6          |
| 10                | 0            |              | 4.0          |              | 3.7          |
| 11                | 0            |              | 4.0          |              | 0            |
| 12                | 0            |              | 3.0          |              | 0.3          |
| 13                | 0            |              | 0.04         |              | 4.2          |
| 14                | GND          |              | 1.65         |              | GND          |
| 15                | 0            |              | 1.76         |              | 0.6          |
| 16                | 0            |              | 3.0          |              | 0.5          |
| 17                | 0            |              | 0.03         |              | 0.5          |
| 18                | 0            |              | GND          |              | 0.3          |
| 19                | 0            |              | 5            |              | 0.5          |
| 20                | 0            |              | 1.78         |              | GND          |
| 21                | 3.0          |              |              |              | 4.2          |
| 22                | 3.0          |              |              |              | 2.5          |
| 23                | 3.0          |              |              |              | 0.8          |
| 24                | NC           |              |              |              | 0.8          |
| 25                | 3.0          |              |              |              | 0.8          |
| 26                | 3.0          |              |              |              | 5.0          |
| 27                | 3.0          |              |              |              | 5.0          |
| 28                | 3            |              |              |              | 5.0          |

NOTE : VOLTAGE ARE TAKEN UNDER TUNED CONDITION WITH

- CONTRAST : Maximum Position
- BRIGHTNESS : Maximum Position
- COLOR : Maximum Position
- SIGNAL INPUT : 80 dBuV
- CHANNEL SETTING : The Last Channel of UHF High
- SIGNAL PATTERN : Colour Bar

VOLTAGE TABLE FOR IC

| SYMBOL  |  | IC801 | IC804 | SYMBOL  |       |
|---------|--|-------|-------|---------|-------|
| PIN NO. |  | (V)   | (V)   | PIN NO. | IC801 |
|         |  |       |       |         | (V)   |
| 1       |  | 5     | GEN   | 43      | 4.2   |
| 2       |  | 1.8   | 4.2   | 44      | 0.8   |
| 3       |  | 1.9   | 4.3   | 45      | 0.8   |
| 4       |  | 0.03  | NC    | 46      | 0.8   |
| 5       |  | GEN   | NC    | 47      | 2.5   |
| 6       |  | 4.9   | NC    | 48      | 5.0   |
| 7       |  | 2.2   | NC    |         |       |
| 8       |  | 2.4   | NC    |         |       |
| 9       |  | 2.5   | NC    |         |       |
| 10      |  | 5.0   | NC    |         |       |
| 11      |  | GEN   | NC    |         |       |
| 12      |  | 2.1   | 5.0   |         |       |
| 13      |  | 5     | GEN   |         |       |
| 14      |  | GEN   | GEN   |         |       |
| 15      |  | 0.42  | 2.3   |         |       |
| 16      |  | 0.5   | 2.0   |         |       |
| 17      |  | 0.4   | 0     |         |       |
| 18      |  | 3.8   | GEN   |         |       |
| 19      |  | 4.5   | NC    |         |       |
| 20      |  | 0.8   | NC    |         |       |
| 21      |  | 2.5   | NC    |         |       |
| 22      |  | NC    | NC    |         |       |
| 23      |  | 4.3   | GEN   |         |       |
| 24      |  | 4.3   | NC    |         |       |
| 25      |  | GEN   | NC    |         |       |
| 26      |  | 0.5   | GEN   |         |       |
| 27      |  | 0.5   | NC    |         |       |
| 28      |  | 0.5   | 5.0   |         |       |
| 29      |  | 0.3   |       |         |       |
| 30      |  | 0.5   |       |         |       |
| 31      |  | 4.2   |       |         |       |
| 32      |  | 0.3   |       |         |       |
| 33      |  | 0     |       |         |       |
| 34      |  | 3.7   |       |         |       |
| 35      |  | 3.6   |       |         |       |
| 36      |  | 3.6   |       |         |       |
| 37      |  | 1.2   |       |         |       |
| 38      |  | 1.3   |       |         |       |
| 39      |  | 3.8   |       |         |       |
| 40      |  | 2.2   |       |         |       |
| 41      |  | 2.2   |       |         |       |
| 42      |  | 4.2   |       |         |       |

NOTE : VOLTAGE ARE TAKEN UNDER TUNED CONDITION WITH

- CONTRAST : Maximum Position
- BRIGHTNESS : Maximum Position
- COLOR : Maximum Position
- SIGNAL INPUT : 80 dBuV
- CHANNEL SETTING : The Last Channel of UIF High
- SIGNAL PATTERN : Colour Bar

VOLTAGE TABLE FOR TRANSISTOR

| SYMBOL | B (V) | C (V) | E (V) | SYMBOL | B (V) | C (V) | E (V) |
|--------|-------|-------|-------|--------|-------|-------|-------|
| Q101   | 10.2  | 10.9  | 11.1  | Q602   | 0.7   | 0.06  | 0     |
| Q102   | 11.1  | 0     | 11.1  | Q603   | 9.2   | 12.2  | 8.7   |
| Q103   | 0.65  | 0.04  | 0     | Q604   | 0     | 0.24  | 0     |
| Q104   | 0.04  | 11.1  | 0     | Q605   | 0.3   | 1.1   | 0     |
| Q105   | 1.10  | 7.3   | 0.4   | Q901   | 9     | 15.3  | 8.4   |
| Q106   | 0     | 2.4   | 0     | Q902   | 6.4   | -0.02 | 2.1   |
| Q107   | 0.04  | 11.1  | 0     | Q903   | -0.02 | 1.55  | 0     |
| Q108   | 11.1  | 0     | 11.1  | Q904   | -2.48 | 264   | 0.1   |
| Q109   | 3.5   | 11.1  | 2.8   | Q905   | 0.6   | 0.04  | 0     |
| Q110   |       |       |       | Q906   | 109.5 | 110   | 110.1 |
| Q111   |       |       |       | Q907   | 110   | 110.1 | 109.4 |
| Q112   |       |       |       | Q501   | 3.13  | 134.2 | 2.6   |
| Q201   | 16.3  | 15.7  | 15.6  | Q502   | 3.6   | 128.4 | 2.6   |
| Q301   | 0.04  | 2.53  | 0     | Q503   | 3.1   | 127.4 | 2.6   |
| Q302   | 0     | 1.9   | 0     | Q701   | 0     | 3     | 0     |
| Q303   | 3.05  | 0     | 3.75  | Q702   | 3     | -0.8  | 3     |
| Q304   |       |       |       |        |       |       |       |
| Q305   |       |       |       |        |       |       |       |
| Q401   | 0.4   | 60.0  | -0.01 |        |       |       |       |
| Q402   | -0.1  | 110.0 | 0     |        |       |       |       |
| Q601   | 0.6   | 2.01  | 0     |        |       |       |       |

NOTE : VOLTAGE ARE TAKEN UNDER TUNED CONDITION WITH

CONTRAST : Maximum Position

BRIGHTNESS : Maximum Position

COLOR : Maximum Position

SIGNAL INPUT : 80 dBuV

CHANNEL SETTING : The last Channel of UHF High

SIGNAL PATTERN : Colour Bar

\*\* THIS SPARE LIST IS MADE FOR TECHNICAL / MAINTENANCE REFERENCE ONLY \*\*

Print Date : 26/11/94      PRODUCT CODE : 932074-ED0001-AT  
 Page Number : 22      DESCRIPTION : 93200-2 PAL/BG W/BCART/STEREO/OPTIONAL M.BLK 240V SAA "TEAC"

| Component Part   | Description / Location  | Unit Subs | Quantity Required | Unit Price     | Amount   |
|--|---|-----------|-------------------|----------------|----------|
| *** ASSEMBLY : 163-932074-EO-A2 NON-COMMON PART FOR PACKING ASS'Y (BG) |   |           |                   |                |          |
| 610-932011-01  | GIFT BOX - TEAC DESIGN {MDL NO.CT-M487} W/HANDLE                                | 0         | 1.00000           | .0000          | .0000    |
| 663-230443-94  | SERIAL NO.LABEL - QC:GT-443/94<br>1 PC STUCK ON CTN, 1 PC STUCK ON RATING LABEL | 0         | 2.00000           | .0071          | .0142    |
| 670-932000-53  | INSTRUCTION MANUAL - TEAC DESIGN {MDL NO.CT-M487} (40P.)                        | 0         | 1.00000           | .1442          | .1442    |
| 678-881301-04  | SYSTEM LABEL - PAL BG   | 0         | 1.00000           | .0062          | .0062    |
| 678-881303-04  | TOTAL CARE STICKER 1  | 0         | 1.00000           | .0481          | .0481    |
| 678-881303-05  | TOTAL CARE STICKER 2  | 0         | 1.00000           | .0154          | .0154    |
| 678-922103-02  | TELETEXT COMPLEMENT - TEAC DESIGN   | 0         | 1.00000           | .1635          | .1635    |
| 678-922004-01  | SCREEN STICKER - TFAG DESIGN {MDL NO.CT-M487}                                   | 0         | 1.00000           | .4673          | .4673    |
| 682-230443-94  | DATE CODE LABEL - QC:GT-443/94  | 0         | 1.00000           | .0027          | .0027    |
| 690-882039-01  | WARRANTY CARD - TEAC DESIGN   | 0         | 1.00000           | .1442          | .1442    |
| 693-932001-05  | EAN CODE LABEL - 9313060005504  | 0         | 1.00000           | .0077          | .0077    |
| 800-932011-00  | POLYFOAM - TOP LEFT   | 0         | 1.00000           | .4019          | .4019    |
| 800-932012-00  | POLYFOAM - TOP RIGHT  | 0         | 1.00000           | .4019          | .4019    |
| 800-932013-00  | POLYFOAM - BOTTOM LEFT  | 0         | 1.00000           | .3500          | .3500    |
| 800-932014-00  | POLYFOAM - BOTTOM RIGHT   | 0         | 1.00000           | .3500          | .3500    |
| 810-041004-13  | POLYBAG 4" X 10" X 0.04MM W/RE-CYCLING MARK<br>FOR HANDSET                      | 0         | 1.00000           | .0062          | .0062    |
| 810-051104-13  | POLYBAG 5" X 11" X 0.04 MM W/ RE-CYCLING MARK<br>FOR AC LINE CORD               | 0         | 1.00000           | .0079          | .0079    |
| 810-091504-13  | POLYBAG 9" X 15" X 0.04MM W/ RE-CYCLING MARK<br>FOR INSTRUCTION MANUAL          | 0         | 1.00000           | .0185          | .0185    |
| 810-373704-04  | POLYBAG 37" X 37" X 0.04MM THKW/PUNCHING HOLES(P.O.MATERIAL)<br>FOR UNIT        | 0         | 1.00000           | .1538          | .1538    |
| 826-301605-00  | FOAM SHEET 30" X 16" X 0.5MM THK.<br>FOR TOP                                    | 0         | 1.00000           | .0750          | .0750    |
| 826-347005-00  | FOAM SHEET - 34" X 20" X 0.5MM<br>FOR BOTTOM                                    | 0         | 1.00000           | .0923          | .0923    |
|  |   |           |                   | ASSB PRICE :   | 2.8688   |
|  |   |           |                   | TOTALA PRICE : | 205.4309 |



\*\* THIS SPARE LIST IS MADE FOR TECHNICAL / MAINTENANCE REFERENCE ONLY

Print Date : 26/11/84                      PRODUCT CODE : 932074-E00001-AT  
 Page Number : 21                              DESCRIPTION : 9320C-2 PAL/BG W/SCART/STEREO/OPTIONAL M.BLK 240V SA

| Component Part | Description / Location  | Unit | Subs | Quantity Required | Unit Price |        |
|----------------|---|------|------|-------------------|------------|--------|
| 126-473071-01  | MYLAR CAP. 0.047 MFD 50V +-10%<br>C010  | PC   | 0    | 1.00000           | .0190      |        |
| 126-474071-01  | MYLAR CAP. 0.47 MFD 50V +-10%<br>C014   | PC   | 0    | 1.00000           | .0788      | .0788  |
| 126-562071-01  | MYLAR CAP. 0.0056 MFD 50V +-10%<br>C020   | PC   | 0    | 1.00000           | .0125      | .0125  |
| 127-105072-03  | ELECT. CAP. .1 MFD 50V +-20%<br>W002  | PC   | 0    | 1.00000           | .0240      | .0240  |
| 127-106042-03  | FILM CAP. 10 MFD 16V +-20%<br>C011  | PC   | 0    | 1.00000           | .0240      | .0240  |
| 127-106042-23  | FILM CAP. BIPOLAR 10MFD 16V +-20%<br>C018,019   | PC   | 0    | 2.00000           | .0635      | .1269  |
| 127-107042-03  | ELECT. CAP. 100 MFD 16V +-20%<br>C003   | PC   | 0    | 1.00000           | .0346      | .0346  |
| 127-474072-03  | ELECT. CAP. 0.47 MFD 50V +-20%<br>C013  | PC   | 0    | 1.00000           | .0240      | .0240  |
| 127-475052-03  | ELECT. CAP. 4.7 MFD 25V +-20%<br>C001,021,022   | PC   | 0    | 3.00000           | .0240      | .0721  |
| 127-476042-03  | ELECT. CAP. .47 MFD 16V +-20%<br>C005   | PC   | 0    | 1.00000           | .0288      | .0288  |
| 127-477042-03  | ELECT. CAP. 470 MFD 16V +-20%<br>C008   | PC   | 0    | 1.00000           | .0712      | .0712  |
| 133-203803-33  | IC TDA3803A PHILIPS<br>IC001  | PC   | 0    | 1.00000           | 3.2692     | 3.2692 |
| 133-304052-14  | IC IC4052BP TOSHIBA<br>IC002  | PC   | 0    | 1.00000           | .6311      | .6311  |
| 160-103255-27  | PIN CONNECTOR 3 PINS PLUG<br>C002,003,004,304,305,306                                 | PC   | 0    | 6.00000           | .0231      | .1385  |
| 160-104255-27  | PIN CONNECTOR 4 PINS PLUG<br>C001,303   | PC   | 0    | 2.00000           | .0308      | .0615  |
| 172-626020-42  | UL 1007 TOP COAT WIRE AWG 26 200MM RED 10 X 10 MM<br>L0001 18 PIN TO L0001 25 PIN     | PC   | 0    | 1.00000           | .0048      | .0048  |
| 172-726000-99  | BARE WIRE 54MM<br>W001,004-006 FOR STEREO BOARD                                       | M    | 0    | .30000            | .0092      | .0028  |
| 190-882000-09  | STEREO P.C.B. (121192)  | PC   | 0    | 1.00000           | .2827      | .2827  |
| 191-301204-07  | 3 PIN SOCKET ASS'Y<br>C004 '1' TO C0306 '1','2' TO '2','3' TO '3'                     | PC   | 0    | 1.00000           | .0871      | .0871  |
| 191-301205-07  | 3 PINS SOCKET ASS'Y L=100MM<br>C002 '1' TO C0304 '1','2' TO '2','3' TO '3'            | PC   | 0    | 1.00000           | .0883      | .0883  |
| 191-301206-07  | 3 PINS SOCKET ASS'Y L=140MM<br>C003 '1' TO C0305 '1','2' TO '2','3' TO '3'            | PC   | 0    | 1.00000           | .0904      | .0904  |
| 191-401201-07  | 4 PINS SOCKET ASS'Y L=60MM<br>C0303 '1' TO C0001 '1','2' TO '2','3' TO '3','4' TO '4' | PC   | 0    | 1.00000           | .1154      | .1154  |
| 630-115512-00  | FIBER WASHER 11 X 5.5 X 1.2 MM<br>FOR STEREO BOARD                                    |      | 0    | 4.00000           | .0048      | .0192  |
| 938-882001-00  | SECAM BOARD HOLDER<br>FOR STEREO BOARD  |      | 0    | 4.00000           | .0346      | .1385  |

ASSB PRICE : 5.8110

\*\* THIS SPARE LIST IS MADE FOR TECHNICAL / MAINTENANCE REFERENCE ONLY \*\*

Print Date : 26/11/94      PRODUCT CODE : 932074-E00001-AT  
 Page Number : 20      DESCRIPTION : 9320C-2 PAL/BG W/SCART/STEREO/OPTIONAL M.BLK 240V SAA "TEAC"

| Component Part  | Description / Location                                     | Unit | Subs | Quantity Required | Unit Price | Amount |
|---|--|------|------|-------------------|------------|--------|
| *** ASSEMBLY : 161-000000-00-01 NON-COM PART FOR GER STEREO ASS'Y |  |      |      |                   |            |        |
| 012-103840-06   | SEMI-FIXED RESISTOR EVND8AA 03B14 10kb<br>VR002            | PC   | 0    | 1.00000           | .0529      | .0529  |
| 012-501340-08   | SEMI-FIXED RESISTOR EVND 8AA 03B52 500B<br>VR003,001       | PC   | 0    | 2.00000           | .0529      | .1058  |
| 102-871400-20   | OSC COIL TWD710229<br>T001                                 | PC   | 0    | 1.00000           | .1265      | .1265  |
| 105-153105-02   | CHOKÉ COIL 15MH 10%      QW-710228-153K<br>L001            | PC   | 0    | 1.00000           | .0769      | .0769  |
| 105-560101-02   | FIXED INDUCTOR COIL 56UH +-10%QW-560K-455-705111<br>L002   | PC   | 0    | 1.00000           | .0458      | .0458  |
| 113-101105-17   | CARBON FILM RESISTOR 100 OHM 1/4W +-5%<br>R005             | PC   | 0    | 1.00000           | .0030      | .0030  |
| 113-102105-17   | CARBON FILM RESISTOR 1K OHM 1/4W +-5%<br>R007,008          | PC   | 0    | 2.00000           | .0028      | .0056  |
| 113-103105-17   | CARBON FILM RESISTOR 10K OHM 1/4W +-5%<br>R006,010,012,014 | PC   | 0    | 4.00000           | .0028      | .0112  |
| 113-123105-17   | CARBON FILM RESISTOR 12K OHM 1/4W +-5%<br>R001             | PC   | 0    | 1.00000           | .0030      | .0030  |
| 113-153105-17   | CARBON FILM RESISTOR 15K OHM 1/4W +-5%<br>R016,017         | PC   | 0    | 2.00000           | .0030      | .0060  |
| 113-222105-17   | CARBON FILM RESISTOR 2.2K OHM 1/4W +-5%<br>R013,015        | PC   | 0    | 2.00000           | .0030      | .0060  |
| 113-223105-17   | CARBON FILM RESISTOR 22K OHM 1/4W +-5%<br>R002             | PC   | 0    | 1.00000           | .0028      | .0028  |
| 113-224105-17   | CARBON FILM RESISTOR 220K OHM 1/4W +-5%<br>R004,009        | PC   | 0    | 2.00000           | .0028      | .0056  |
| 113-332105-17   | CARBON FILM RESISTOR 3.3K OHM 1/4W +-5%<br>FOR L001        | PC   | 0    | 1.00000           | .0028      | .0028  |
| 113-472105-17   | CARBON FILM RESISTOR 4.7K OHM 1/4W +-5%<br>R011            | PC   | 0    | 1.00000           | .0030      | .0030  |
| 113-562105-17   | CARBON FILM RESISTOR 5.6K OHM 1/4W +-5%<br>W002            | PC   | 0    | 2.00000           | .0028      | .0056  |
| 113-563105-17   | CARBON FILM RESISTOR 56K OHM 1/4W +-5%<br>R003             | PC   | 0    | 1.00000           | .0028      | .0028  |
| 123-103370-90   | CERAMIC CAP. 0.01 MFD 50V +80 -20%<br>C016,009             | PC   | 0    | 2.00000           | .0098      | .0196  |
| 123-222350-90   | CERAMIC CAP. 0.0022 MFD 50V +-10% (B TYPE)<br>C017         | PC   | 0    | 1.00000           | .0140      | .0140  |
| 123-223370-90   | CERAMIC CAP. 0.022 MFD 50V +80-20%<br>C002                 | PC   | 0    | 1.00000           | .0128      | .0128  |
| 123-471350-60   | CERAMIC CAP. 470 PF 50V +-10% (SL TYPE)<br>C023,024        | PC   | 0    | 2.00000           | .0150      | .0319  |
| 126-102071-01   | MYLAR CAP. 0.001 MFD 50V +-10%<br>C015                     | PC   | 0    | 1.00000           | .0104      | .0104  |
| 126-104071-01   | MYLAR CAP. 0.1 MFD 50V +-10%<br>C004,012                   | PC   | 0    | 2.00000           | .0260      | .0519  |
| 126-224071-01   | MYLAR CAP 0.22 MFD 50V +-10%<br>C006,007                   | PC   | 0    | 2.00000           | .0462      | .0923  |

\*\* THIS SPARE LIST IS MADE FOR TECHNICAL / MAINTENANCE REFERENCE ONLY \*\*

Print Date : 26/11/94      PRODUCT CODE : 932074-E00001-AT  
 Page Number : 19      DESCRIPTION : 9320C-2 PAL/BG W/SCART/STEREO/OPTIONAL M.BLK 240V 5AA "TEAC"

| Component Part   | Description / Location   | Unit | Subs | Quantity Required | Unit Price | Amount   |
|--|--|------|------|-------------------|------------|----------|
| *** ASSEMBLY : 158-932074-ED-A2 NON-COMMON PART FOR CASING ASS'Y (M.BLK) |  |      |      |                   |            |          |
| 007-120001-40  | QRT 20" A40KRD62X09 SAMSUNG (SOUTH HEMISPHERE CRT)                                   | PC   | 0    | 1.00000           | 101.6619   | 101.6619 |
| 166-468023-4E  | SPEAKER 2" X 3-1/2" 16 OHM 3W K.T.   |      | 0    | 2.00000           | .9231      | 1.8462   |
| 172-622004-40  | UL 1007 TOP COAT WIRE #22 40MMBLACK 5 X 5 MM<br>FOR CRT SOCKET PIN 12 TO GND         | PC   | 0    | 1.00000           | .0028      | .0028    |
| 179-105000-00  | UL PVC TUBE 5MM DIA<br>460MM FOR SPK. 'L', 460MM FOR SPK 'R'                         | M    | 0    | .86000            | .1865      | .1604    |
| 186-227503-14  | BATTERY 3A   | PC   | 0    | 2.00000           | .0635      | .1269    |
| 191-200044-09  | 2 PIN SOCKET ASSM'Y L=440MM<br>CN201 '1' TO SPK. L '1', '2' TO SPK. L '1'            | PC   | 0    | 1.00000           | .0442      | .0442    |
| 191-301018-07  | 3 PIN SOCKET ASS'Y (2 WIRE) L=500MM<br>CN202 '1' TO CTRK. R '1', '2' TO SPK. R '1'   | PC   | 0    | 1.00000           | .0665      | .0665    |
| 515-303410-10  | SELF-TAPPING SCREW 3 X 10 W/B/T (HARDEN)<br>2 FOR CHANNEL P.C.B. , 8 FOR SPEAKER MTG | PC   | 0    | 10.00000          | .0035      | .0348    |
| 517-304308-10  | SELF-TAPPING SCREW 3 X 8 P/W/A(HARDEN)<br>FOR CHANNEL P.O.D.                         | PC   | 0    | 4.00000           | .0025      | .0100    |
| 669-882001-0E  | RATING LABEL - TEAC DESIGN 240V {MDL NO.CT-M487}                                     |      | 0    | 1.00000           | .0481      | .0481    |
| 703-932001-00  | SPEAKER GRILLE (LEFT) - BLACK DOUBLE SIDE W/SPRAY {NEW}                              |      | 0    | 1.00000           | .3596      | .3596    |
| 703-932002-00  | SPEAKER GRILLE (RIGHT) - BLACK DOUBEL SIDE W/SPRAY {NEW}                             |      | 0    | 1.00000           | .3596      | .3596    |
| 777-892001-00  | SPRING IN Ø7.0 X L22<br>FOR POWER KNOB   |      | 0    | 1.00000           | .0058      | .0058    |
| 881-932001-01  | V.HOLD PLATE (BALANCE)   |      | 0    | 1.00000           | .0192      | .0192    |
| 884-8R2020-02  | JACK COVER-TEAC DESIGN WHI SS.W/21 PIN SOCKET HOLE                                   |      | 0    | 1.00000           | .1577      | .1577    |
| 884-932055-01  | PRESET PLATE (C-2) - BLACK W/ L.GREY S.S. ENG STD (8 KEYS)                           |      | 0    | 1.00000           | .1635      | .1635    |
| 900-932012-04  | FRONT CABINET (C-2)- SONY GREY SPRAY W/GOLD S.S.                                     |      | 0    | 1.00000           | 3.6385     | 3.6385   |
| 917-932010-02  | RENTOP LENS(C-2)-T.RED W/GOLD S.S. ENG STD (DUAL STEREO I/II)                        |      | 0    | 1.00000           | .0731      | .0731    |
| 919-932021-06  | PRRSET DOOR (C-2) - TEAC (A) DESIGN {MDL NO.CT-M487}                                 |      | 0    | 1.00000           | .2077      | .2077    |
| 938-932010-00  | POWER SWITCH ADAPTOR   |      | 0    | 1.00000           | .0117      | .0117    |
| 977-932010-00  | CHANNEL AND VOLUME KNOB  |      | 0    | 1.00000           | .0456      | .0456    |
| 991-932010-00  | POWER KNOB (C-2)   |      | 0    | 1.00000           | .0192      | .0192    |

ASSB PRICE : 109.0628

Print Date : 10/11/84

PRODUCT CODE : 932074-E00001-AT

Page Number : 18

DESCRIPTION : 93250-X PAL/80 W/8CART/STEREO/OPTIONAL M.BLK 240V SAA "TEAC"

| Component Part   | Description / Location  | Unit | Subs | Quantity Required | Unit Price | Amount |
|--|---|------|------|-------------------|------------|--------|
| *** ASSEMBLY : 159-932074-E0-A0 COMMON PART FOR CABINING ASSEMBLY (BG) |   |      |      |                   |            |        |
| 008-550201-05  | DEGAUSSING COIL 60T 44MM X 34 MM (W/FIVE LAYERS OF TAPE)<br>L902      | PC   | 0    | 1.00000           | 1.5769     | 1.5769 |
| 514-400414-10  | SELF-TAPPING SCREW 4 X 14 B/T (HARDEN)<br>FOR FLYBACK                 | PC   | 0    | 1.00000           | .0056      | .0056  |
| 514-400425-10  | SELF-TAPPING SCREW 4 X 25 B/T (HARDEN)<br>FOR CAB FNT & REAR          | PC   | 0    | 9.00000           | .0094      | .0848  |
| 515-303408-10  | SELF-TAPPING SCREW 3 X 8 W/B/T (HARDEN)<br>3 FOR CHANNEL KNOB         | PC   | 0    | 3.00000           | .0033      | .0098  |
| 524-932901-01  | CRT MOUNTING SCREW 7 X 40 VP (HARDEN)<br>FOR CRT MTG                  | PC   | 0    | 4.00000           | .0769      | .3077  |
| 622-882001-00  | FELT PAPER ONE SIDE W/TAPE 10 X 2 X 0.3MM<br>BACK CAB                 |      | 0    | 4.00000           | .0029      | .0115  |
| 622-882802-00  | FELT L240 X W17 X T0.5MM W/TAPE<br>FOR REAR CAB                       |      | 0    | 5.00000           | .0692      | .3462  |
| 744-881301-00  | SPRING FOR C.R.T. MOUNTING 5.2 X 42 X 0.6MM                           |      | 0    | 1.00000           | .0481      | .0481  |
| 834-230801-00  | RUBBER WASHER OD=23 , ID=8 , T=1.0<br>FOR CRT MTG                     |      | 0    | 4.00000           | .0192      | .0769  |
| 840-011024-01  | RAID CORD L240 X W10 X T1 MM W/TAPE<br>FOR BETWEEN CRT AND FRONT CAB. |      | 0    | 6.00000           | .0000      | .0000  |
| 902-932012-01  | BACK CABINET (G)  |      | 0    | 1.00000           | 3.9500     | 3.9500 |
| 954-082100-00  | AC LINE CORD CLIP   |      | 0    | 1.00000           | .0231      | .0231  |
| 954-892001-00  | HIGH VOLTAGE SPACER<br>FOR CRT  |      | 0    | 1.00000           | .0552      | .0552  |
| 954-931301-00  | STUD POST BLACK ABS<br>FOR FRONT CAB                                  |      | 0    | 6.00000           | .0231      | .1385  |

ASSEMB PRICE : 6.0342

\*\* THIS SPARE LIST IS MADE FOR TECHNICAL / MAINTENANCE REFERENCE ONLY \*\*

Print Date : 26/11/94

PRODUCT CODE : 932074-E00001-AT

Page Number : 17

DESCRIPTION : 9320C-2 PAL/BG W/SCART/STEREO/OPTIONAL M.BLK 240V SAA "TEAC"

| Component Part | Description / Location                               | Unit Subs | Quantity Required | Unit Price | Amount |
|----------------|--|-----------|-------------------|------------|--------|
| 781-882102-02  | ALUMINIUM HEAT SINK (A)<br>FOR Q904                  | 0         | 1.00000           | .3577      | .3577  |
| 781-892001-00  | ALUMINIUM HEAT SINK (C)<br>FOR IC401                 | 0         | 1.00000           | .2385      | .2385  |
| 783-881306-01  | SHIELD CAN COVER                                     | 0         | 1.00000           | .0759      | .0759  |
| 783-881313-00  | SHIELD CAN   | 0         | 1.00000           | .1288      | .1288  |
| 929-002001-00  | LED HOLDER BKT FOR CIRCLE LED<br>FOR LED 601,602,603 | 0         | 3.00000           | .0152      | .0456  |

ASSB PRICE : 65.1996

\*\* THIS SPARE LIST IS MADE FOR TECHNICAL / MAINTENANCE REFERENCE ONLY \*\*

Print Date : 26/11/84      PRODUCT CODE : 932074-E00001-A1  
 Page Number : 16      DESCRIPTION : 93200-2 PAL/BG W/SCART/STEREO/OPTIONAL M.BLK 240V SAA "TEA6"

| Component Part | Description / Location  | Unit | Subs | Quantity Required | Unit Price | Amount |
|----------------|---|------|------|-------------------|------------|--------|
| 191-300040-09  | 3 PIN SOCKET ASSM'Y<br>CN402 '3' TO CRT PCB 'H'   | PC   | 0    | .00000            | .1275      | .0000  |
| 191-301000-07  | 3 PIN SOCKET ASSM'Y L=240MM W/SHIELDING CABLE<br>CN204 '1' TO CH. PCB VR303 '1', '2' TO '2', '3' TO '3' | PC   | 0    | 1.00000           | .1126      | .1126  |
| 191-301021-07  | 3 PIN SOCKET ASSM'Y L=180MM<br>CN604 '1' TO CH. PCB 'A', '2' TO 'B', '3' TO 'C'                         | PC   | 0    | 1.00000           | .0519      | .0519  |
| 191-301022-07  | 3 PIN SOCKET ASS'Y L=220MM<br>CN603 '1' TO CH. P.C.B. 'D'   | PC   | 0    | 1.00000           | .0538      | .0538  |
| 191-301022-07  | 3 PIN SOCKET ASS'Y L=220MM<br>CN603 '2' TO CH. P.C.B. 'E'   | PC   | 0    | .00000            | .0538      | .0000  |
| 191-301022-07  | 3 PIN SOCKET ASS'Y L=220MM<br>CN603 '3' TO CH. P.C.B. 'F'   | PC   | 0    | .00000            | .0538      | .0000  |
| 191-500048-09  | 5 PIN SOCKET ASSM'Y<br>CN203 '1' TO CRT PCB 'A'   | PC   | 0    | 1.00000           | .1135      | .1135  |
| 191-500048-09  | 5 PIN SOCKET ASSM'Y<br>CN203 '2' TO CRT PCB 'B'   | PC   | 0    | .00000            | .1135      | .0000  |
| 191-500048-09  | 5 PIN SOCKET ASSM'Y<br>CN203 '3' TO CRT PCB 'C'   | PC   | 0    | .00000            | .1135      | .0000  |
| 191-500048-09  | 5 PIN SOCKET ASSM'Y<br>CN203 '4' TO CRT PCB 'D'   | PC   | 0    | .00000            | .1135      | .0000  |
| 191-500048-09  | 5 PIN SOCKET ASSM'Y<br>CN203 '5' TO CRT PCB 'E'   | PC   | 0    | .00000            | .1135      | .0000  |
| 191-801005-07  | 8 PINS SOCKET ASS'Y L=200MM<br>CN605 '1' TO CH PCB 'G', '2' TO 'H', '3' TO 'I'                          | PC   | 0    | 1.00000           | .1437      | .1437  |
| 191-801005-07  | 8 PINS SOCKET ASS'Y L=200MM<br>CN605 '4' TO CH PCB 'J', '5' TO 'K', '6' TO 'L'                          | PC   | 0    | .00000            | .1437      | .0000  |
| 191-801005-07  | 8 PINS SOCKET ASS'Y L=200MM<br>CN605 '7' TO CH PCB 'M', '8' TO 'N'                                      | PC   | 0    | .00000            | .1437      | .0000  |
| 504-305006-10  | MACHINE SCREW 3 X 6 B/M<br>2 FOR POWER SWITCH MTG, 2 FOR IC901, 2 FOR IC201                             | PC   | 0    | 4.00000           | .0012      | .0048  |
| 517-303312-10  | SELF-TAPPING SCREW 3 X 12 W/A W/H=7MM (HARDEN)<br>FOR HEAT SINK (A), (B) & (C)                          | PC   | 0    | 3.00000           | .0032      | .0096  |
| 580-101251-01  | CABLE TIE L=100MM<br>FOR CRT BOARD, CONNECTOR   | PC   | 0    | 11.00000          | .0037      | .0407  |
| 746-063101-00  | TEST PIN: TOTAL LENGTH 18.6MM THK: 0.8MM<br>TP104, 103  | PC   | 0    | 2.00000           | .0038      | .0076  |
| 750-063101-00  | SOLDERING LUG LEG: 8X4MM<br>FOR IC401, Q402, Q904   | PC   | 0    | 3.00000           | .0023      | .0069  |
| 750-063102-01  | 35MM SOLDERING LUG      OD: 7 ID: 3.2 LEG: 4X35MM<br>FOR AC LINE CORD, SPK. CONNECTOR                   | PC   | 0    | 4.00000           | .0087      | .0348  |
| 750-892002-00  | DEGAUSSING COIL LUG<br>FOR DEGAUSSING COIL  | PC   | 0    | 4.00000           | .0096      | .0385  |
| 766-686801-00  | FUSE HOLDER   | PC   | 0    | 2.00000           | .0135      | .0270  |
| 779-882001-01  | IRON HEAT SINK (D)<br>FOR IC901   | PC   | 0    | 1.00000           | .0404      | .0404  |
| 779-882801-00  | IRON HEAT SINK<br>FOR IC201   | PC   | 0    | 1.00000           | .1462      | .1462  |
| 781-882001-02  | ALUMINIUM HEAT SINK (B)<br>FOR Q402   | PC   | 0    | 1.00000           | .2115      | .2115  |

\*\* THIS SPARE LIST IS MADE FOR TECHNICAL / MAINTENANCE REFERENCE ONLY \*\*

Print Date : 26/11/94

PRODUCT CODE : 932074-200001-AT

Page Number : 15

DESCRIPTION : 93200-? PAL/BA W/SBART/OTCREO/OPTIONAL M RIK 24QV SAA "TEAC"

| Component Part | Description / Location   | Unit | Subs | Quantity Required | Unit Price | Amount |
|----------------|--|------|------|-------------------|------------|--------|
| 172-626012-44  | UL 1007 TOP COAT WIRE AWG 26 120MM YELLOW 10 X 10 MM<br>MAIN P.C.B. 'F' TO 'F'           | PC   | 0    | 1.00000           | .0038      | .0038  |
| 172-626014-40  | UL 1007 TOP COAT WIRE AWG 26 140MM BLACK 10 X 10 MM<br>'A2' TO 'A2'                      | PC   | 0    | 1.00000           | .0041      | .0041  |
| 172-626014-43  | UL 1007 TOP COAT WIRE AWG 26 140MM ORANGE 10 X 10 MM<br>MAIN P.C.B. '2' TO '2'           | PC   | 0    | 1.00000           | .0035      | .0035  |
| 172-626022-45  | UL 1007 TOP COAT WIRE AWG 26 220MM PINK 10 X 10 MM<br>MAIN P.C.B. 'N' TO 'N'             | PC   | 0    | 1.00000           | .0063      | .0063  |
| 172-626022-45  | UL 1007 TOP COAT WIRE AWG 26 220MM BLUE 10 X 10 MM<br>MAIN P.C.B. 'P' TO 'P', 'I' TO 'I' | PC   | 0    | 2.00000           | .0061      | .0121  |
| 172-726000-99  | BARF WIRE 54MM<br>W001-005,007-035,037-049,051-055,071-075,079                           | M    | 0    | 5.60000           | .0092      | .0517  |
| 172-726000-99  | BARF WIRE 54MM<br>W081-083,085-087,091-093,601-604                                       | M    | 0    | .00000            | .0092      | .0000  |
| 172-830120-98  | FLAT BRIDED WIRE<br>CRT GROUND   | PC   | 0    | 1.20000           | .1355      | .1635  |
| 173-622014-30  | SINGLE SHIELD WIRE AWG 26 140MM BLACK<br>MAIN P.C.B. 'O' TO 'O'                          | PC   | 0    | 1.00000           | .0500      | .0500  |
| 174-611017-50  | DOUBLE SHIELD WIRE AWG 26 180MM BLACK<br>MAIN P.C.B. 'A.B' TO 'A.B', 'G.H' TO 'G.H'      | PC   | 0    | 2.00000           | .0558      | .1115  |
| 177-655053-02  | 2 PIN FLAT CABLE WIRE AWG 26 50MM<br>MAIN P.C.B. 'C.D' TO 'C.D.'                         | PC   | 0    | 1.00000           | .0048      | .0048  |
| 179-001010-00  | OIL SLEEVING 1 MM DIA.<br>L=80MM,20MM FOR D904,20MM FOR BR901,20MM-G150,149              | M    | 0    | .08000            | .0001      | .0000  |
| 179-001010-00  | OIL SLEEVING 1 MM DIA.<br>20MM FOR C404  | M    | 0    | .00000            | .0001      | .0000  |
| 179-105000-00  | UL PVC TUBE 3MM DIA<br>L=60MM FOR AC LINE CORD   | M    | 0    | .06000            | .1855      | .0112  |
| 179-403080-00  | 3MM DIA. SHRINKABLE TUBE<br>FOR 180MM SOLDERING LUG                                      | PC   | 0    | .13000            | .2750      | .0357  |
| 179-403080-00  | SHRINKABLE TUBE<br>180MM FOR 4-DEGAUSSING COIL LUG(P/N:750-892002-00)                    | PC   | 0    | .18000            | .3000      | .0540  |
| 182-233150-03  | FUSE T3.15A 250V<br>F901   | PC   | 0    | 1.00000           | .1027      | .1027  |
| 190-882004-00  | P.C. BOARD CRT (220393)  | PC   | 0    | 1.00000           | .3673      | .3673  |
| 190-932003-P6  | CHANNEL P.C.B. (110894)  | PC   | 0    | 1.00000           | .3365      | .3365  |
| 190-932007-01  | MAIN P.C. BOARD (020994)   | PC   | 0    | 1.00000           | 2.4577     | 2.4577 |
| 191-100034-09  | 1 PIN SOCKET ASSM'Y L=220MM<br>CRT GND TO CN501  | PC   | 0    | 1.00000           | .0429      | .0429  |
| 191-100035-09  | 1 PIN SOCKET ASSM'Y<br>FROM POWER SWITCH PCB 'A' TO CN901                                | PC   | 0    | 1.00000           | .1072      | .1072  |
| 191-100036-09  | 1 PIN SOCKET ASSM'Y<br>FROM POWER SWITCH PCB 'B' TO CN502                                | PC   | 0    | 1.00000           | .0915      | .0915  |
| 191-201001-07  | 2 PINS SOCKET ASS'Y L=160MM<br>FOR CN601 TO POWER SWITCH                                 | PC   | 0    | 1.00000           | .0342      | .0342  |
| 191-300040-09  | 3 PIN SOCKET ASSM'Y<br>CN402 '1' TO CRT PCB 'J'  | PC   | 0    | 1.00000           | .1275      | .1275  |
| 191-300040-09  | 3 PIN SOCKET ASSM'Y<br>CN402 '2' TO CRT PCB 'I'  | PC   | 0    | .00000            | .1275      | .0000  |

\*\* THIS SPARE LIST IS MADE FOR TECHNICAL / MAINTENANCE REFERENCE ONLY \*\*

Print Date : 26/11/94      PRODUCT CODE : 932074-E00001-AT  
 Page Number : 14      DESCRIPTION : 93200-2 PAL/BG W/SCART/STEREO/OPTIONAL M.BLK 240V SAA "TEAC"

| Component Part | Description / Location  | Unit | Subs | Quantity Required | Unit Price | Amount |
|----------------|---|------|------|-------------------|------------|--------|
| 133-207812-31  | IC L7812CV SGS-THOMSON<br>IC103   | PC   | 0    | 1.00000           | .3077      | .3077  |
| 133-304241-33  | I.C. PC74HCT241P PHILIPS<br>IC301   | PC   | 0    | 1.00000           | .3077      | .3077  |
| 133-305114-31  | I.C. TEA5114A SGS<br>IC302  | PC   | 0    | 1.00000           | .9875      | .9875  |
| 136-500001-00  | REMOTE RECEIVER (KODENSHI<br>OPT601      HC-SZ01)   | PC   | 0    | 1.00000           | .9526      | .9526  |
| 137-100000-31  | CRYSTAL 10 MHZ HODRAY<br>X601   | PC   | 0    | 1.00000           | .3482      | .3482  |
| 137-888723-20  | CRYSTAL 8.86 MHZ KDS<br>X301  | PC   | 0    | 1.00000           | .4049      | .4049  |
| 144-041420-85  | POWER SW. 70060-115 TECHNOKEY (TVR)<br>S612   | PC   | 0    | 1.00000           | 1.2572     | 1.2572 |
| 146-104614-13  | TACT SWITC HOKURIKU<br>S602,603,604,805,501,606,608,609,810,613,611,614                                   | PC   | 0    | 12.00000          | .0712      | .8544  |
| 160-101001-08  | PIN CONNECTOR 1 PIN PLUG      STRAIGHT<br>FOR CN501,901,902   | PC   | 0    | 3.00000           | .0203      | .0608  |
| 160-102255-27  | PIN CONNECTOR 2 PINS PLUG      STRAIGHT (UL)<br>CN601,201   | PC   | 0    | 2.00000           | .0154      | .0308  |
| 160-102805-08  | PIN CONNECTOR 2 PIN PLUG      STRAIGHT<br>CN903   | PC   | 0    | 1.00000           | .0519      | .0519  |
| 160-103255-27  | PIN CONNECTOR 3 PINS PLUG<br>CN202,604,506,603,204  | PC   | 0    | 5.00000           | .0231      | .1154  |
| 160-103805-08  | PIN CONNECTOR 3 PIN PLUG      STRAIGHT<br>CN402   | PC   | 0    | 1.00000           | .0698      | .0698  |
| 160-104605-08  | PIN CONNECTOR 4 PIN PLUG      STRAIGHT<br>CN401   | PC   | 0    | 1.00000           | .0743      | .0743  |
| 160-105255-27  | PIN CONNECTOR 5 PINS WAFER      2.5 PITCH<br>CN203  | PC   | 0    | 1.00000           | .0385      | .0385  |
| 160-106255-27  | PIN CONNECTOR 6 PINS WAFER      (SHS) S11-W<br>CN301  | PC   | 0    | 1.00000           | .0462      | .0462  |
| 160-108255-27  | PIN CONNECTOR 8 PINS PLUG<br>CN605  | PC   | 0    | 1.00000           | .0721      | .0721  |
| 161-540004-01  | CRT SOCKET ISH-01 IN CHANG  | PC   | 0    | 1.00000           | .6346      | .6346  |
| 161-583702-22  | 21 PIN SOCKET<br>J901   | PC   | 0    | 1.00000           | .4038      | .4038  |
| 172-520007-40  | UL 1007 TOP COAT WIRE #20 70MMBLACK 5 X 5 MM<br>1 FOR MAIN PCB 'Q' TO 'Q'                                 | PC   | 0    | 1.00000           | .0054      | .0054  |
| 172-520012-40  | UL 1007 TOP COAT WIRE AWG 20 120MM BLACK 10 X 10 MM<br>MAIN P.C.B. 'J' TO 'J'                             | PC   | 0    | 1.00000           | .0097      | .0097  |
| 172-520014-40  | UL 1007 TOP COAT WIRE AWG 20 140MM BLACK 10 X 10 MM<br>MAIN P.C.B. 'E' TO 'E'                             | PC   | 0    | 1.00000           | .0116      | .0116  |
| 172-525006-44  | UL 1007 TOP COAT WIRE AWG 26 60 MM YELLOW 10 X 10 MM<br>G403 GND TO DOUBLE SHIELD WIRE 'A,B' GND          | PC   | 0    | 1.00000           | .0017      | .0017  |
| 172-525008-40  | UL 1007 TOP COAT WIRE AWG 26 80MM BLACK 10 X 10 MM<br>Q904 LUG TO MAIN PCB 'L', IC401 LUG TO MAIN PCB 'M' | PC   | 0    | 3.00000           | .0022      | .0066  |
| 172-525008-40  | UL 1007 TOP COAT WIRE AWG 26 80MM BLACK 10 X 10 MM<br>G402 LUG TO MAIN PCB 'K'                            | PC   | 0    | .00000            | .0022      | .0000  |



\*\* THIS SPARE LIST IS MADE FOR TECHNICAL / MAINTENANCE REFERENCE ONLY \*\*

Print Date : 26/11/94      PRODUCT CODE : 932074-E00001-AT  
 Page Number : 15      DESCRIPTION : 9320C-2 PAL/BG W/SCART/STEREO/OPTIONAL M.BLK 240V SAA "TEAC"

| Component Part | Description / Location   | Unit | Subs | Quantity Required | Unit Price | Amount |
|----------------|--|------|------|-------------------|------------|--------|
| 130-411091-01  | ZENER DIODE 9.1V<br>ZD902  | PC   | 0    | 1.00000           | .0240      | .0240  |
| 130-422120-00  | ZENER DIODE 1W 12V<br>ZD402                                      | PC   | 0    | 1.00000           | .0596      | .0596  |
| 130-512044-00  | LED 3MM RED 204H0C<br>LEU001,802,603                             | PC   | 0    | 3.00000           | .0298      | .0894  |
| 131-211011-1A  | TRANSISTOR 2SA1013 (R) TOSHIBA<br>Q906                           | PC   | 0    | 1.00000           | .1151      | .1151  |
| 131-211015-00  | TRANSISTOR 2SA1015 TOSHIBA<br>Q101,102,108,303                   | PC   | 0    | 4.00000           | .0290      | .1161  |
| 131-220774-2Q  | TRANSISTOR 2SB774 MATSUSHITA<br>Q902                             | PC   | 0    | 1.00000           | .1519      | .1519  |
| 131-230388-00  | TRANSISTOR 2SC388A TOSHIBA<br>Q105                               | PC   | 0    | 1.00000           | .1340      | .1340  |
| 131-231815-25  | TRANSISTOR 2SC1815 TOSHIBA<br>Q103,107,901,903,301,602,302       | PC   | 0    | 7.00000           | .0268      | .1873  |
| 131-231815-25  | TRANSISTOR 2SC1815 TOSHIBA<br>Q603,604,605,106,109               | PC   | 0    | 5.00000           | .0268      | .1340  |
| 131-232230-00  | TRANSISTOR 2SQ2230A-Y TOSHIBA<br>Q905                            | PC   | 0    | 1.00000           | .0853      | .0853  |
| 131-232335-5Q  | TRANSISTOR 2SC2335 L/K NEC<br>Q907                               | PC   | 0    | 1.00000           | .7740      | .7740  |
| 131-232482-00  | TRANSISTOR 2SC2482 TOSHIBA<br>Q401,501,502,503                   | PC   | 0    | 4.00000           | .0968      | .3870  |
| 131-241266-00  | TRANSISTOR 2SD1266Q MATSUSHITA<br>Q201                           | PC   | 0    | 1.00000           | .3985      | .3985  |
| 131-241431-00  | TRANSISTOR 2SD1431 TOSHIBA WITH MICA SHEET (24MM X 33MM)<br>Q904 | PC   | 0    | 1.00000           | 1.1015     | 1.1015 |
| 131-241555-00  | TRANSISTOR 2SD1555 TOSHIBA<br>Q402                               | PC   | 0    | 1.00000           | .9377      | .9377  |
| 131-462369-00  | TRANSISTOR PH2369 PHILIPS<br>Q601                                | PC   | 0    | 1.00000           | .0635      | .0635  |
| 133-100322-33  | PHILIPS IC PCA CTV322S<br>IC601                                  | PC   | 0    | 1.00000           | 5.6538     | 5.6538 |
| 133-103504-33  | I.C. TDA3504 PHILIPS<br>IC304                                    | PC   | 0    | 1.00000           | 2.7885     | 2.7885 |
| 133-103857-33  | IC TDA3857 PHILIPS<br>IC101                                      | PC   | 0    | 1.00000           | 2.3365     | 2.3365 |
| 133-104505-33  | I.C. TDA4505E PHILIPS<br>IC102                                   | PC   | 0    | 1.00000           | 2.9173     | 2.9173 |
| 133-104510-33  | PHILIPS IC TDA4510<br>IC305                                      | PC   | 0    | 1.00000           | 1.6154     | 1.6154 |
| 133-108626-14  | IC TA8626N TOSHIBA<br>IC303                                      | PC   | 0    | 1.00000           | 1.6373     | 1.6373 |
| 133-203653-33  | I.C. TDA3653B PHILIPS<br>IC401                                   | PC   | 0    | 1.00000           | .6288      | .6288  |
| 133-204445-16  | I.C. LA4445 SANYO<br>IC201                                       | PC   | 0    | 1.00000           | .9228      | .9228  |
| 133-207805-31  | I.C. L7805CV SGS<br>IC901  | PC   | 0    | 1.00000           | .2977      | .2977  |

\*\* THIS SPARE LIST IS MADE FOR TECHNICAL / MAINTENANCE REFERENCE ONLY \*\*

Print Date : 26/11/94

PRODUCT CODE : 932074-E00001-AT

Page Number : 12

DESCRIPTION : 9320C-2 PAL/BG W/SCART/STEREO/OPTIONAL M.BLK 240V SAA "TEAC"

| Component Part | Description / Location   | Unit | Subs | Quantity Required | Unit Price | Amount |
|----------------|--|------|------|-------------------|------------|--------|
| 127-226042-03  | ELECT. CAP. 22 MFD 16V +-20%<br>C609                             | PC   | 0    | 1.00000           | .0240      | .0240  |
| 127-227042-03  | ELECT. CAP. 220 MFD 16V +-20%<br>C820,171,205                    | PC   | 0    | 3.00000           | .0404      | .1212  |
| 127-227082-03  | ELECT. CAP. 220 MFD 35V +-20%<br>C817,410,411                    | PC   | 0    | 3.00000           | .0712      | .2135  |
| 127-228052-03  | ELECT. CAP. 2200 MFD 25V +-20%<br>C408                           | PC   | 0    | 1.00000           | .3192      | .3192  |
| 127-228052-03  | ELECT. CAP. 2200 MFD 25V +-20%<br>C422                           | PC   | 0    | 1.00000           | .3192      | .3192  |
| 127-333071-03  | ELECT. CAP. 3.3uf 50V +-10% (TIME CONSTANT)<br>C404              | PC   | 0    | 1.00000           | .0567      | .0567  |
| 127-333042-03  | ELECT. CAP. 33 MFD 16V +-20%<br>C144,921                         | PC   | 0    | 2.00000           | .0240      | .0481  |
| 127-475042-03  | ELECT. CAP. 4.7 MFD 16V +-20%<br>C607,608,604,136,337,211,212    | PC   | 0    | 7.00000           | .0240      | .1683  |
| 127-476042-03  | ELECT. CAP. 47 MFD 16V +-20%<br>C481,204,205                     | PC   | 0    | 3.00000           | .0288      | .0865  |
| 127-476072-03  | ELECT. CAP. 47 MFD 50V +-20% HIGHIGON<br>C808                    | PC   | 0    | 1.00000           | .0404      | .0404  |
| 127-476132-03  | ELECT. CAP. 47 MFD 160V +-20%<br>C915                            | PC   | 0    | 1.00000           | .2221      | .2221  |
| 127-477042-03  | ELECT. CAP. 470 MFD 16V +-20%<br>C146,922,120,313,336,919        | PC   | 0    | 6.00000           | .0712      | .4269  |
| 127-477042-03  | ELECT. CAP. 470 MFD 16V +-20%<br>C213,215                        | PC   | 0    | 2.00000           | .0712      | .1423  |
| 130-134148-01  | SILICON DIODE IN4148<br>D406,301,302,303,604                     | PC   | 0    | 5.00000           | .0092      | .0462  |
| 130-134148-01  | SILICON DIODE IN4148<br>D601,606,607,608,609,610,603,103,104,105 | PC   | 0    | 10.00000          | .0092      | .0923  |
| 130-240809-50  | VARIABLE CAPACITANCE DIODE BB809<br>D102,101                     | PC   | 0    | 2.00000           | .2308      | .4615  |
| 130-310155-00  | BRIDGE RECTIFIER RB156 SANKEN<br>BR901                           | PC   | 0    | 1.00000           | .4838      | .4838  |
| 130-311541-60  | RECTIFIER DIODE 1R5JU41<br>D904                                  | PC   | 0    | 1.00000           | .1786      | .1786  |
| 130-311545-60  | RECTIFIER DIODE 1R5JH45<br>D404                                  | PC   | 0    | 1.00000           | .1637      | .1637  |
| 130-314406-00  | RECTIFIER DIODE ERB44-06 FUJI<br>D905                            | PC   | 0    | 1.00000           | .1620      | .1620  |
| 130-315295-00  | RECTIFIER DIODE S5295G TOSHIBA<br>D902,903,901,401,402,403,405   | PC   | 0    | 7.00000           | .0968      | .6773  |
| 130-410051-01  | ZENER DIODE 5.1V 1/2W +-5%<br>ZD102                              | PC   | 0    | 1.00000           | .0240      | .0240  |
| 130-410082-01  | ZENER DIODE 8.2V<br>ZD901  | PC   | 0    | 1.00000           | .0240      | .0240  |
| 130-410100-01  | ZENER DIODE 10V 1/2W<br>ZD401                                    | PC   | 0    | 1.00000           | .0246      | .0246  |
| 130-410574-00  | ZENER DIODE UPC 574J NED OR KA33V SAMSUNG<br>ZD101               | PC   | 0    | 1.00000           | .1593      | .1593  |

\*\* THIS SPARE LIST IS MADE FOR TECHNICAL / MAINTENANCE REFERENCE ONLY \*\*

Print Date : 26/11/94      PRODUCT CODE : 932074-E00001-AT  
 Page Number : 11      DESCRIPTION : 22P0C-2 PAL/EG W/SCART/STEREO/OPTIONAL M.BLK 240V SAA "TEAC"

| Component Part | Description / Location   | Unit | Subs | Quantity Required | Unit Price | Amount |
|----------------|--|------|------|-------------------|------------|--------|
| 126-323071-01  | MYLAR CAP. 0.022 MFD 50V +-10%<br>C321,322,323,207,208                           | PC   | 0    | 5.00000           | .0135      | .0673  |
| 126-224071-01  | MYLAR CAP 0.22 MFD 50V +-10%<br>C140,348   | PC   | 0    | 2.00000           | .0462      | .0923  |
| 126-2240/1-01  | MYLAR CAP 0.22 MFD 50V +-10%<br>C603,115   | PC   | 0    | 2.00000           | .0462      | .0923  |
| 126-272070-31  | POLYPROPYLENE CAP. 0.0022 MFD 50V +-5%<br>C141                                   | PC   | 0    | 1.00000           | .0697      | .0697  |
| 126-332151-41  | METALIZED POLYPROPYLENE CAP. 0.0033 MFD 1600V +-10%<br>C418                      | PC   | 0    | 1.00000           | .2635      | .2635  |
| 126-3330/1-01  | MYLAR CAP. 0.033 MFD 50V +-10%<br>C905   | PC   | 0    | 1.00000           | .0142      | .0142  |
| 126-334071-01  | MYLAR CAP. 0.33 MFD 50V +-10%<br>C143,145  | PC   | 0    | 2.00000           | .0613      | .1227  |
| 126-472071-01  | MYLAR CAP. 0.0047 MFD 50V +-10%<br>C403,405                                      | PC   | 0    | 2.00000           | .0104      | .0208  |
| 126-473071-01  | MYLAR CAP. 0.047 MFD 50V +-10%<br>C134,346                                       | PC   | 0    | 2.00000           | .0150      | .0381  |
| 126-473211-41  | METALLIZED POLYPROPYLENE CAP 0.047 MFD 250V +-10% VDE<br>C802                    | PC   | 0    | 1.00000           | .1488      | .1488  |
| 126-474201-31  | POLYPROPYLENE CAP 0.47 MFD 200V +-10%<br>C414                                    | PC   | 0    | 1.00000           | .2788      | .2788  |
| 126-474211-41  | METALLIZED POLYPROPYLENE CAP 0.47 MFD 250V +-10% VDE<br>C901                     | PC   | 0    | 1.00000           | .3796      | .3796  |
| 127-105072-03  | ELECT. CAP. 1 MFD 50V +-20%<br>C107,142,341,348,353,152                          | PC   | 3    | 6.00000           | .0240      | .1442  |
| 127-105132-03  | ELECT. CAP. 1 MFD 160V +-20%<br>C416   | PC   | 0    | 1.00000           | .0481      | .0481  |
| 127-106043-03  | ELECT. CAP. 10 MFD 16V +-20%<br>C702,627,821,801,815,619,626,622,351             | PC   | 0    | 9.00000           | .0240      | .2163  |
| 127-106042-03  | ELECT. CAP. 10 MFD 16V +-20%<br>C203,312,328,329,327,316,317,315,340,314,318,338 | PC   | 0    | 12.00000          | .0240      | .2885  |
| 127-106102-03  | ELECT CAP. 10MFD 100V +-20% NICHICON<br>C910                                     | PC   | 0    | 1.00000           | .0481      | .0481  |
| 127-106252-03  | ELECT. CAP. 10 MFD 250V +-20%<br>C424  | PC   | 0    | 1.00000           | .1346      | .1346  |
| 127-107042-03  | ELECT. CAP. 100 MFD 16V +-20%<br>C125,119,625,209,210,311                        | PC   | 0    | 6.00000           | .0346      | .2077  |
| 127-107062-03  | ELECT. CAP. 100 MFD 35V +-20%<br>C201,406  | PC   | 0    | 2.00000           | .0519      | .1038  |
| 127-107132-03  | ELECT. CAP. 100 MFD 160V +-20%<br>C417   | PC   | 0    | 1.00000           | .3231      | .3231  |
| 127-107402-03  | ELECT. CAP. 100 MFD 400V +-20%<br>C905   | PC   | 0    | 1.00000           | .9904      | .9904  |
| 127-108042-03  | ELECT. CAP. 1000 MFD 16V +-20%<br>C421   | PC   | 0    | 1.00000           | .1192      | .1192  |
| 127-108052-03  | ELECT. CAP. 1000 MFD 25V +-20%<br>C217   | PC   | 0    | 1.00000           | .1442      | .1442  |
| 127-225072-03  | ELECT. CAP 2.2 MFD 50V +-20%<br>C106,108,111,113,116                             | PC   | 0    | 5.00000           | .0240      | .1202  |

Print Date : 26/11/94

PRODUCT CODE : 932074-E00001-AT

Page Number : 10

DESCRIPTION : 9320C-2 PAL/BG W/SCART/STEREO/OPTIONAL M.BLK 240V SAA "TEAC"

| Component Part | Description / Location   | Unit | Subs | Quantity Required | Unit Price | Amount |
|----------------|--|------|------|-------------------|------------|--------|
| 123-150340-93  | CERAMIC CAP. 15 PF 50V +-5% (NPO)<br>GT301   | PC   | 0    | 1.00000           | .0144      | .0144  |
| 123-151350-60  | CERAMIC CAP 150 PF 50V +-10% (SL TYPE)<br>C137                                     | PC   | 0    | 1.00000           | .0116      | .0116  |
| 123-220340-60  | CERAMIC CAP. 22 PF 50V +-5% (SL TYPE)<br>C616,617,618,620                          | PC   | 0    | 4.00000           | .0098      | .0392  |
| 123-221350-60  | CERAMIC CAP. 220 PF 50V +-10% (SL TYPE)<br>C508,504,502,347                        | PC   | 0    | 4.00000           | .0106      | .0423  |
| 123-221551-90  | CERAMIC CAP. 220 PF 500V +-10% MATSUSHITA<br>C916                                  | PC   | 0    | 1.00000           | .0481      | .0481  |
| 123-222850-10  | CERAMIC CAP. 0.0022 MFD 2KV +-10% MATSUSHITA<br>C911,419                           | PC   | 0    | 2.00000           | .2500      | .5000  |
| 123-223370-90  | CERAMIC CAP. 0.022 MFD 50V +80-20%<br>G109,131,124,122,126,129,135,331,332,335,343 | PC   | 0    | 11.00000          | .0128      | .1408  |
| 123-223370-90  | CERAMIC CAP. 0.022 MFD 50V +80-20%<br>C344,105,127                                 | PC   | 0    | 3.00000           | .0128      | .0384  |
| 123-270340-60  | CERAMIC CAP. 27 PF 50V +-5% (SL-TYPE)<br>C114                                      | PC   | 0    | 1.00000           | .0098      | .0098  |
| 123-270340-93  | CERAMIC CAP. 27PF 50V +-5% (NPO)<br>C628,813                                       | PC   | 0    | 2.00000           | .0119      | .0238  |
| 123-390340-93  | CERAMIC CAP. 39PF 50V +-5% (NPO)<br>C630   | PC   | 0    | 1.00000           | .0149      | .0149  |
| 123-472350-90  | CERAMIC CAP. 0.0047 MFD 50V +-10% (B TYPE)<br>C918,820                             | PC   | 0    | 2.00000           | .0173      | .0345  |
| 123-472551-90  | CERAMIC CAP. 0.0047 MFD 500V +-10% (B TYPE) MATSUSHITA<br>C913,413,423             | PC   | 0    | 3.00000           | .1173      | .3519  |
| 123-472552-90  | CERAMIC CAP. 0.0047 MFD 500V +-10% (B TYPE) SMALL SIZE<br>C903,904,907             | PC   | 0    | 3.00000           | .0654      | .1963  |
| 123-509340-93  | CERAMIC CAP. 5 PF 50V +-5% (NPO)<br>C345   | PC   | 0    | 1.00000           | .0123      | .0123  |
| 123-681350-60  | CERAMIC CAP. 680 PF 50V +-10% (SL TYPE)<br>C407                                    | PC   | 0    | 1.00000           | .0394      | .0394  |
| 123-821850-10  | CERAMIC CAP. 820 PF 2KV +-10% (SL TYPE) MATSUSHITA<br>C914                         | PC   | 0    | 1.00000           | .1308      | .1308  |
| 125-381120-11  | POLYSTYRENE CAP. 360PF 125V +-5%<br>C150   | PC   | 0    | 1.00000           | .0346      | .0346  |
| 125-391120-11  | POLYSTYRENE CAP. 390 PF 125V +-5%<br>C149  | PC   | 0    | 1.00000           | .0346      | .0346  |
| 126-102071-01  | MYLAR CAP. 0.001 MFD 50V +-10%<br>C130,402,412                                     | PC   | 0    | 3.00000           | .0104      | .0312  |
| 126-104071-01  | MYLAR CAP. 0.1 MFD 50V +-10%<br>C602,908,304,305,308,310,324,325,326,133           | PC   | 0    | 10.00000          | .0260      | .2596  |
| 126-104071-01  | MYLAR CAP. 0.1 MFD 50V +-10%<br>C409,214,216                                       | PC   | 0    | 3.00000           | .0260      | .0779  |
| 126-104101-31  | POLYPROPYLENE CAP. 0.1 MFD 100V +-10%<br>C425                                      | PC   | 0    | 1.00000           | .1212      | .1212  |
| 126-222071-01  | MYLAR CAP. 0.0022 MFD 50V +-10%<br>C610,624  | PC   | 0    | 2.00000           | .0104      | .0208  |
| 126-222161-41  | METALIZED POLYPROPYLENE CAP. 0.0022 MFD 1600V +-10%<br>C420                        | PC   | 0    | 1.00000           | .2442      | .2442  |

\*\* THIS SPARE LIST IS MADE FOR TECHNICAL / MAINTENANCE REFERENCE ONLY \*\*

Print Date : 26/11/84

PRODUCT CODE : 032074-E00001-AT

Page Number : 8

DESCRIPTION : 9320C-2 PAL/BG W/SCART/STEREO/OPTIONAL N.BLK 240V SAA "TEAC"

| Component Part | Description / Location   | Unit | Subs | Quantity Required | Unit Price | Amount |
|----------------|--|------|------|-------------------|------------|--------|
| 113-473105-17  | CARBON FILM RESISTOR 47K OHM 1/4W +-5%<br>R622,648,651,301,341,405             | PC   | 0    | 6.00000           | .0030      | .0178  |
| 113-475105-17  | CARBON FILM RESISTOR 4.7 OHM 1/4W +-5%<br>R210,211                             | PC   | 0    | 2.00000           | .0028      | .0056  |
| 113-511105-17  | CARBON FILM RESISTOR 510 OHM 1/4W +-5%<br>R512                                 | PC   | 0    | 1.00000           | .0028      | .0028  |
| 113-562105-17  | CARBON FILM RESISTOR 5.6K OHM 1/4W +-5%<br>R105,324,202,337                    | PC   | 0    | 4.00000           | .0028      | .0112  |
| 113-565205-92  | CARBON COMPOSITION RESISTOR 5.6M 1/2W +-5%<br>R915,917                         | PC   | 0    | 2.00000           | .0663      | .1327  |
| 113-682102-17  | CARBON FILM RESISTOR 6.8K OHM 1/4W +-2%<br>R903                                | PC   | 0    | 1.00000           | .0052      | .0052  |
| 113-688106-17  | CARBON FILM RESISTOR 6.8K OHM 1/4W +-5%<br>R909,418,349                        | PC   | 0    | 3.00000           | .0028      | .0084  |
| 113-688205-42  | FUSING RESISTOR 0.68 OHM 1/2W +-5%<br>R919                                     | PC   | 0    | 1.00000           | .0462      | .0462  |
| 113-688305-42  | FUSING RESISTOR 0.68 OHM 1W +-5%<br>R916,423,424                               | PC   | 0    | 3.00000           | .0587      | .1760  |
| 113-750105-17  | CARBON FILM RESISTOR 75 OHM 1/4W +-5%<br>R929,930,931,932                      | PC   | 0    | 4.00000           | .0028      | .0112  |
| 113-820105-17  | CARBON FILM RESISTOR 82 OHM 1/4W +-5%<br>R418,101                              | PC   | 0    | 2.00000           | .0028      | .0056  |
| 113-821105-17  | CARBON FILM RESISTOR 820 OHM 1/4W +-5%<br>R425,350                             | PC   | 0    | 2.00000           | .0028      | .0056  |
| 113-822105-17  | CARBON FILM RESISTOR 8.2K OHM 1/4W +-5%<br>R905,925,420,625                    | PC   | 0    | 4.00000           | .0030      | .0119  |
| 113-823105-17  | CARBON FILM RESISTOR 82K OHM 1/4W +-5%<br>R145                                 | PC   | 0    | 1.00000           | .0028      | .0028  |
| 113-824105-17  | CARBON FILM RESISTOR 820K OHM 1/4W +-5%<br>R180                                | PC   | 0    | 1.00000           | .0028      | .0028  |
| 114-210200-01  | THERMISTOR (NICHICON ZPB53 BL 200C)<br>TH901                                   | PC   | 0    | 1.00000           | .4231      | .4231  |
| 123-100340-60  | CERAMIC CAP. 10PF +-5% 50V (SL TYPE)<br>C349                                   | PC   | 0    | 1.00000           | .0098      | .0098  |
| 123-101350-60  | CERAMIC CAP. 100 PF 50V +-10% (SL TYPE)<br>G612                                | PC   | 0    | 1.00000           | .0098      | .0098  |
| 123-102350-90  | CERAMIC CAP. 0.001 MFD 50V +-10% (B TYPE)<br>C138,614,110,148                  | PC   | 0    | 4.00000           | .0106      | .0423  |
| 123-102850-10  | CERAMIC CAP. 0.001 MFD 2KV +-10% MATSUSHITA<br>C501                            | PC   | 0    | 1.00000           | .1385      | .1385  |
| 123-103350-90  | CERAMIC CAP. 0.01 MFD 50V +-10% (B TYPE)<br>C352                               | PC   | 0    | 1.00000           | .0276      | .0276  |
| 123-103370-90  | CERAMIC CAP. 0.01 MFD 50V +80 -20%<br>C102,117,126,333,334,330,339,147,319,118 | PC   | 0    | 10.00000          | .0098      | .0981  |
| 123-104270-90  | CERAMIC CAP. 0.1 MFD 25V +80 -20%<br>C623,123,139,306,309,307,101              | PC   | 0    | 7.00000           | .0335      | .2344  |
| 123-121350-60  | CERAMIC CAP. 120 PF 50V +-10% (SL TYPE)<br>C301,302,303                        | PC   | 0    | 3.00000           | .0098      | .0294  |
| 123-122551-90  | CERAMIC CAP. 0.0012 MFD 500V +-10% (B TYPE) MATSUSHITA<br>C415                 | PC   | 0    | 1.00000           | .0423      | .0423  |

\*\* THIS SPARE LIST IS MADE FOR TECHNICAL / MAINTENANCE REFERENCE ONLY \*\*

Print Date : 26/11/84

PRODUCT CODE : R32074-E00001-AT

Page Number : 8

DESCRIPTION : R320C-2 PAL/BG W/SCART/STEREO/OPTIONAL M.RLK 240V SAA "TEAC"

| Component Part | Description / Location  | Unit | Subs | Quantity Required | Unit Price | Amount |
|----------------|---|------|------|-------------------|------------|--------|
| 113-270105-17  | CARBON FILM RESISTOR 27 OHM 1/4W +-5%<br>R113                           | PC   | 0    | 1.00000           | .0028      | .0028  |
| 113-270405-75  | METAL OXIDE FILM RESISTOR 27 OHM 2W +-5%<br>R912                        | PC   | 0    | 1.00000           | .0240      | .0240  |
| 113-271105-17  | CARBON FILM RESISTOR 270 OHM 1/4W +-5%<br>R147                          | PC   | 0    | 1.00000           | .0028      | .0028  |
| 113-272105-17  | CARBON FILM RESISTOR 2.7K OHM 1/4W +-5%<br>R142                         | PC   | 0    | 1.00000           | .0030      | .0030  |
| 113-272205-12  | CARBON FILM RESISTOR 2.7K OHM 1/2W +-5%<br>R502,503,504                 | PC   | 0    | 3.00000           | .0062      | .0185  |
| 113-272205-17  | CARBON FILM RESISTOR 2.7K OHM 1/2W +-5%<br>R222,409,415                 | PC   | 0    | 3.00000           | .0062      | .0185  |
| 113-273105-17  | CARBON FILM RESISTOR 27K OHM 1/4W +-5%<br>R155,603                      | PC   | 0    | 2.00000           | .0032      | .0065  |
| 113-330105-17  | CARBON FILM RESISTOR 33 OHM 1/4W +-5%<br>R928                           | PC   | 0    | 1.00000           | .0028      | .0028  |
| 113-331105-17  | CARBON FILM RESISTOR 330 OHM 1/4W +-5%<br>R905,343,344,353              | PC   | 0    | 4.00000           | .0030      | .0119  |
| 113-332102-17  | CARBON FILM RESISTOR 3.3K OHM 1/4W +-2%<br>R904                         | PC   | 0    | 1.00000           | .0052      | .0052  |
| 113-332105-17  | CARBON FILM RESISTOR 3.3K OHM 1/4W +-5%<br>R611,645,647                 | PC   | 0    | 3.00000           | .0028      | .0084  |
| 113-333105-17  | CARBON FILM RESISTOR 33K OHM 1/4W +-5%<br>R118,127,114,117,144          | PC   | 0    | 5.00000           | .0028      | .0139  |
| 113-334105-17  | CARBON FILM RESISTOR 330K OHM 1/4W +-5%<br>R131                         | PC   | 0    | 1.00000           | .0028      | .0028  |
| 113-334205-75  | METAL OXIDE FILM RESISTOR 330KOHM 1W +-5%<br>R913                       | PC   | 0    | 1.00000           | .0192      | .0192  |
| 113-335105-17  | CARBON FILM RESISTOR 3.3M OHM 1/4W +-5%<br>R356                         | PC   | 0    | 1.00000           | .0028      | .0028  |
| 113-338405-75  | METAL OXIDE FILM RESISTOR 0.330HM 2W +-5%<br>R914                       | PC   | 0    | 1.00000           | .0240      | .0240  |
| 113-339505-75  | METAL OXIDE FILM RESISTOR 3.3 OHM 3W +-5%<br>R422                       | PC   | 0    | 1.00000           | .0510      | .0510  |
| 113-390505-75  | METAL OXIDE FILM RESISTOR 39 OHM 3W +-5%<br>R926                        | PC   | 0    | 1.00000           | .0558      | .0558  |
| 113-390605-75  | METAL OXIDE FILM RESISTOR 39 OHM 5W +-5%<br>R915                        | PC   | 0    | 1.00000           | .1154      | .1154  |
| 113-391105-17  | CARBON FILM RESISTOR 390 OHM 1/4W +-5%<br>R506,508,347,934              | PC   | 0    | 4.00000           | .0030      | .0119  |
| 113-392105-17  | CARBON FILM RESISTOR 3.9K OHM 1/4W +-5%<br>R404,633                     | PC   | 0    | 2.00000           | .0028      | .0056  |
| 113-393105-17  | CARBON FILM RESISTOR 39K OHM 1/4W +-5%<br>R316                          | PC   | 0    | 1.00000           | .0030      | .0030  |
| 113-470105-17  | CARBON FILM RESISTOR 47 OHM 1/4W +-5%<br>R933,204,206                   | PC   | 0    | 3.00000           | .0030      | .0089  |
| 113-471105-17  | CARBON FILM RESISTOR 470 OHM 1/4W +-5%<br>R412,123,124                  | PC   | 0    | 3.00000           | .0028      | .0084  |
| 113-472105-17  | CARBON FILM RESISTOR 4.7K OHM 1/4W +-5%<br>R910,149,345,348,120,158,159 | PC   | 0    | 7.00000           | .0030      | .0209  |

\*\* THIS SPARE LIST IS MADE FOR TECHNICAL / MAINTENANCE REFERENCE ONLY \*\*

Print Date : 26/11/04      PRODUCT CODE : 022074-00001-AF  
 Page Number : 7      DESCRIPTION : 9320C-2 PAL/8G W/SMART/STEREO/OPTIONAL M.BLK 240V SAA "TEAC"

| Component Part | Description / Location   | Unit | Subs | Quantity Required | Unit Price | Amount |
|----------------|--|------|------|-------------------|------------|--------|
| 113-124205-12  | CARBON FILM RESISTOR 120K OHM 1/2W +-5%<br>R421  | PC   | 0    | 1.00000           | .0062      | .0062  |
| 113-152105-17  | CARBON FILM RESISTOR 1.5K OHM 1/4W +-5%<br>R150,152                                    | PC   | 0    | 2.00000           | .0030      | .0060  |
| 113-153105-17  | CARBON FILM RESISTOR 15K OHM 1/4W +-5%<br>R504,510,116,401,616                         | PC   | 0    | 5.00000           | .0030      | .0149  |
| 113-153405-75  | METAL OXIDE FILM RESISTOR 15K OHM 2W +-5%<br>R510,511,505                              | PC   | 0    | 3.00000           | .0240      | .0719  |
| 113-154105-17  | CARBON FILM RESISTOR 150K OHM 1/4W +-5%<br>R133  | PC   | 0    | 1.00000           | .0028      | .0028  |
| 113-159305-75  | METAL OXIDE FILM RESISTOR 1.5 OHM 1W +-5%<br>R410                                      | PC   | 0    | 1.00000           | .0192      | .0192  |
| 113-159405-42  | NON-FLAMMABLE FUSE RESISTOR 1.5 OHM 2W +-5%<br>R501                                    | PC   | 0    | 1.00000           | .0731      | .0731  |
| 113-181105-17  | CARBON FILM RESISTOR 180 OHM 1/4W +-5%<br>R135,305,307,310,313,340                     | PC   | 0    | 6.00000           | .0028      | .0167  |
| 113-182105-17  | CARBON FILM RESISTOR 1.8K OHM 1/4W +-5%<br>R907,628,629,630,631,148,335,334            | PC   | 0    | 8.00000           | .0032      | .0258  |
| 113-182105-17  | CARBON FILM RESISTOR 1.8K OHM 1/4W +-5%<br>R206,208,311                                | PC   | 0    | 3.00000           | .0032      | .0097  |
| 113-183105-17  | CARBON FILM RESISTOR 18K OHM 1/4W +-5%<br>R655   | PC   | 0    | 1.00000           | .0030      | .0030  |
| 113-184105-17  | CARBON FILM RESISTOR 180K OHM 1/4W +-5%<br>R151,156                                    | PC   | 0    | 2.00000           | .0028      | .0056  |
| 113-202605-75  | METAL OXIDE FILM RESISTOR 2K OHM 5W +-5%<br>R416                                       | PC   | 0    | 1.00000           | .1154      | .1154  |
| 113-221105-17  | CARBON FILM RESISTOR 220 OHM 1/4W +-5%<br>R411,112,106                                 | PC   | 0    | 3.00000           | .0028      | .0084  |
| 113-221305-75  | METAL OXIDE FILM RESISTOR 220 OHM 1W +-5%<br>R413                                      | PC   | 0    | 1.00000           | .0192      | .0192  |
| 113-222101-67  | METAL FILM RESISTOR 2.2K OHM 1/4W +-1%<br>R146   | PC   | 0    | 1.00000           | .0092      | .0092  |
| 113-222105-17  | CARBON FILM RESISTOR 2.2K OHM 1/4W +-5%<br>R507,509,513,141,652,332,201,205,207        | PC   | 0    | 9.00000           | .0030      | .0268  |
| 113-223101-67  | METAL FILM RESISTOR 22K OHM 1/4W +-1%<br>R606  | PC   | 0    | 1.00000           | .0092      | .0092  |
| 113-223105-17  | CARBON FILM RESISTOR 22K OHM 1/4W +-5%<br>R646,129,312,314,417,406,208,209,346,111,614 | PC   | 0    | 11.00000          | .0028      | .0307  |
| 113-224105-17  | CARBON FILM RESISTOR 220K OHM 1/4W +-5%<br>R333,653                                    | PC   | 0    | 2.00000           | .0028      | .0056  |
| 113-229105-17  | CARBON FILM RESISTOR 2.2 OHM 1/4W +-5%<br>R125,342,327                                 | PC   | 0    | 3.00000           | .0028      | .0084  |
| 113-229205-12  | CARBON FILM RESISTOR 2.2 OHM 1/2W +-5%<br>R139,351                                     | PC   | 0    | 2.00000           | .0062      | .0123  |
| 113-229305-72  | METAL OXIDE FILM RESISTOR 2.2 OHM 1W +-5%<br>R203                                      | PC   | 0    | 1.00000           | .0192      | .0192  |
| 113-229405-75  | METAL OXIDE FILM RESISTOR 2.2 OHM 2W +-5%<br>R902                                      | PC   | 0    | 1.00000           | .0240      | .0240  |
| 113-229605-51  | WIRE WOUND CEMENT RESISTOR 2.2 OHM 5W +-5%<br>R901                                     | PC   | 0    | 1.00000           | .1654      | .1654  |

\*\* THIS SPARE LIST IS MADE FOR TECHNICAL / MAINTENANCE REFERENCE ONLY \*\*

Print Date : 26/11/84      PRODUCT CODE : 932074-E00001-A7  
 Page number : 8      DESCRIPTION : 932074-2 PAL/EG W/SCART/STEREO/OPTIONAL M.BLK 240V SAA "TEAC"

| Component Part | Description / Location   | Unit | Subs | Quantity Required | Unit Price | Amount |
|----------------|--|------|------|-------------------|------------|--------|
| 105-828103-02  | FIXED INDUCTIVE COIL 0.82UH 10% AXIAL TYPE<br>L101                                 | PC   | 0    | 1.00000           | .0342      | .0342  |
| 105-829101-02  | FIXED INDUCTIVE COIL 8.2UH 10%<br>L301,302,303,304                                 | PC   | 0    | 4.00000           | .0342      | .1368  |
| 111-104285-2A  | VARIABLE RESISTOR 100KB (VA09CH1U20TMB100K HOKURIKU)<br>VR303                      | PC   | 0    | 1.00000           | .2308      | .2308  |
| 113-100105-17  | CARBON FILM RESISTOR 10 OHM 1/4W +-5%<br>R601,119,108,140,134                      | PC   | 0    | 5.00000           | .0028      | .0139  |
| 113-101105-17  | CARBON FILM RESISTOR 100 OHM 1/4W +-5%<br>R624,625,650,643,644,638                 | PC   | 0    | 6.00000           | .0030      | .0179  |
| 113-101105-17  | CARBON FILM RESISTOR 100 OHM 1/4W +-5%<br>R309,317,318,319,322,326,336,337,338     | PC   | 0    | 9.00000           | .0030      | .0268  |
| 113-101305-75  | METAL OXIDE FILM RESISTOR 100 OHM 1W +-5%<br>R130                                  | PC   | 0    | 1.00000           | .0192      | .0192  |
| 113-102105-17  | CARBON FILM RESISTOR 1K OHM 1/4W +-5%<br>R921,329,352,331,402,107,126,325,330,613  | PC   | 0    | 10.00000          | .0028      | .0279  |
| 113-102105-17  | CARBON FILM RESISTOR 1K OHM 1/4W +-5%<br>R619,617,607,608,618,620,621,634,637,641  | PC   | 0    | 10.00000          | .0028      | .0279  |
| 113-102105-17  | CARBON FILM RESISTOR 1K OHM 1/4W +-5%<br>R638,639,642,109,143,153,320,302,328,157  | PC   | 0    | 10.00000          | .0028      | .0279  |
| 113-102305-75  | METAL OXIDE FILM RESISTOR 1K OHM 1W +-2%<br>R414                                   | PC   | 0    | 1.00000           | .0192      | .0192  |
| 113-103101-67  | METAL FILM RESISTOR 10K OHM 1/4W +-1%<br>R609                                      | PC   | 0    | 1.00000           | .0092      | .0092  |
| 113-103105-12  | CARBON FILM RESISTOR 10K OHM 1/4W +-5%<br>R968,403                                 | PC   | 0    | 2.00000           | .0023      | .0045  |
| 113-103105-17  | CARBON FILM RESISTOR 10K OHM 1/4W +-5%<br>R605,612,623,635,649,632,103,110,113,104 | PC   | 0    | 10.00000          | .0030      | .0298  |
| 113-103105-17  | CARBON FILM RESISTOR 10K OHM 1/4W +-5%<br>R303,304,315,354,407,654                 | PC   | 0    | 6.00000           | .0030      | .0179  |
| 113-103105-17  | CARBON FILM RESISTOR 10K OHM 1/4W +-5%<br>R154,321,339,927,408                     | PC   | 0    | 5.00000           | .0030      | .0149  |
| 113-103405-75  | METAL OXIDE FILM RESISTOR 10K OHM 2W +-5%<br>R137                                  | PC   | 0    | 1.00000           | .0240      | .0240  |
| 113-104105-17  | CARBON FILM RESISTOR 100K OHM 1/4W +-5%<br>R136,355                                | PC   | 0    | 2.00000           | .0028      | .0056  |
| 113-104205-12  | CARBON FILM RESISTOR 100K OHM 1/2W +-5%<br>R920                                    | PC   | 0    | 1.00000           | .0062      | .0062  |
| 113-104305-75  | METAL OXIDE FILM RESISTOR 100KOHM 1W +-5%<br>R925                                  | PC   | 0    | 1.00000           | .0192      | .0192  |
| 113-105105-17  | CARBON FILM RESISTOR 1M OHM 1/4W +-5%<br>R138                                      | PC   | 0    | 1.00000           | .0030      | .0030  |
| 113-120305-75  | METAL OXIDE FILM RESISTOR 12 OHM 1W +-5%<br>R911                                   | PC   | 0    | 1.00000           | .0192      | .0192  |
| 113-120405-75  | METAL OXIDE FILM RESISTOR 12 OHM 2W +-5%<br>R924                                   | PC   | 0    | 1.00000           | .0240      | .0240  |
| 113-122105-17  | CARBON FILM RESISTOR 1.2K OHM 1/4W +-5%<br>R121,122,323,602                        | PC   | 0    | 4.00000           | .0028      | .0112  |
| 113-123105-17  | CARBON FILM RESISTOR 12K OHM 1/4W +-5%<br>R132,615                                 | PC   | 0    | 2.00000           | .0030      | .0060  |



\*\* THIS SPARE LIST IS MADE FOR TECHNICAL / MAINTENANCE REFERENCE ONLY \*\*

Print Date : 26/11/84

PRODUCT CODE : 832074-000&I-AT

Page Number : 5

DESCRIPTION : 9320G-2 PAL/BG W/SCART/STEREO/OPTIONAL N.BLK 240V SAA "TEAC"

| Component Part   | Description / Location   | Unit | Subs | Quantity Required | Unit Price | Amount |
|--|--|------|------|-------------------|------------|--------|
| *** ASSEMBLY : 158-832074-ER-AD COM PART FOR CHASSIS ASS'Y (BG) "CPU322" |  |      |      |                   |            |        |
| 001-220027-07  | FLYBACK TRANSFORMER FCM20B027 SAMSUNG.<br>T402                   | PC   | 0    | 1.00000           | 7.0702     | 7.0702 |
| 012-102340-06  | SEMI-FIXED RESISTOR EVND8AA 03B13 1KB<br>VR401,501               | PC   | 0    | 2.00000           | .0529      | .1058  |
| 012-103340-06  | SEMI-FIXED RESISTOR EVND8AA 03B14 10KB<br>VR103                  | PC   | 0    | 1.00000           | .0529      | .0529  |
| 012-104340-06  | SEMI-FIXED RESISTOR EVND8AA 03B13 100KB<br>VR101                 | PC   | 0    | 1.00000           | .0558      | .0558  |
| 012-301330-06  | SEMI-FIXED RESISTOR EVND2AA 03B32 300B<br>VR503,505              | PC   | 0    | 2.00000           | .0587      | .1173  |
| 012-501340-06  | SEMI-FIXED RESISTOR EVND 8AA 03B52 500B<br>VR302                 | PC   | 0    | 1.00000           | .0529      | .0529  |
| 012-502330-06  | SEMI-FIXED RESISTOR EVND2AA 03B53 5KB<br>VR502,504,501           | PC   | 0    | 3.00000           | .0587      | .1760  |
| 012-505340-07  | SEMI-FIXED RESISTOR EVND8AA 03B54 50KB<br>VR102,301              | PC   | 0    | 2.00000           | .0529      | .1058  |
| 013-100001 02  | GLASS DELAY LINE (ADVANCE MOTION/WEI HAW YCS-EN645A11)<br>DLY302 | PC   | 0    | 1.00000           | .9481      | .9481  |
| 013-200005-00  | Y-DELAY LINE YBL5DF18X<br>DIY301                                 | PC   | 0    | 1.00000           | .4345      | .4345  |
| 101-190710-96  | HORIZONTAL DRIVE TRANSFORMER R0710<br>T401                       | PC   | 0    | 1.00000           | .2885      | .2885  |
| 101-288820-95  | LINE FILTER 70MH<br>L501   | PC   | 0    | 1.00000           | .7308      | .7308  |
| 101-414025-94  | SWITCHING POWER TRANSFORMER (HL4025B)<br>T901                    | PC   | 0    | 1.00000           | 2.0769     | 2.0769 |
| 102-370600-02  | TANK COIL / AFC COIL COILS 707851<br>T101,103                    | PC   | 0    | 2.00000           | .1000      | .2000  |
| 102-671300-02  | SOUND IF COIL. COILS 710256<br>T102,104                          | PC   | 0    | 2.00000           | .1000      | .2000  |
| 102-770200-02  | SECAM COLOR PAL DELAY LINE MATCHING COILS 707850<br>T301         | PC   | 0    | 1.00000           | .0865      | .0865  |
| 105-100101-02  | FIXED INDUCTIVE COIL 10UH +-10%<br>L601                          | PC   | 0    | 1.00000           | .0458      | .0458  |
| 105-100103-02  | FIXED INDUCTIVE COIL 10UH +-10% AXIAL TYPE<br>L102               | PC   | 0    | 1.00000           | .0342      | .0342  |
| 105-150101-02  | FIXED INDUCTIVE COIL 15UH 10%<br>L104                            | PC   | 0    | 1.00000           | .0458      | .0458  |
| 105-181101-02  | FIXED INDUCTIVE COIL 180UH 10%<br>L501                           | PC   | 0    | 1.00000           | .0458      | .0458  |
| 105-201106-02  | CHOKE COIL 200UH 10% CH9012- 201K (ELEC PRODUCT)<br>L903         | PC   | 0    | 1.00000           | .1682      | .1682  |
| 105-220101-02  | FIXED INDUCTIVE COIL 22UH 10%<br>L305                            | PC   | 0    | 1.00000           | .0458      | .0458  |
| 105-650052-13  | LINEARITY COIL 65UH FOR 20" CRT<br>L401                          | PC   | 0    | 1.00000           | .3423      | .3423  |
| 105-689101-02  | FIXED INDUCTIVE COIL 6.8UH 10%<br>L103                           | PC   | 0    | 1.00000           | .0342      | .0342  |

Print Date : 26/11/94

PRODUCT CODE : 932074-E00031-AT

Page Number : 4

DESCRIPTION : 9320C-2 PAL/BC W/SCART/STEREO/OPTIONAL M.BLK 240V SAA "TEAG"

| Component Part   | Description / Location  | Unit | Subs | Quantity Required | Unit Price | Amount |
|--|---|------|------|-------------------|------------|--------|
| *** ASSEMBLY : 158-932074-ER-A1 NON-COMMON PART FOR CHASSIS ASS'Y (BB) |   |      |      |                   |            |        |
| 003-131424-02  | TUNER OSCAR UVE33-W24/R16-3649MITSUMI                               | PQ   | 0    | 1.00000           | 9.0727     | 9.0727 |
| 105-100101-02  | FIXED INDUCTIVE COIL 10UH +-10%<br>L004                             | PC   | 0    | 1.00000           | .0458      | .0458  |
| 105-101101-02  | FIXED INDUCTOR 100 UH QW-101K-455-703854<br>L003                    | PC   | 0    | 1.00000           | .0342      | .0342  |
| 107-105500-66  | SOUND TRAP CERAMIC FILTER 5.5MHZ TFS-5.5MB MURATA<br>CF103          | PC   | 0    | 1.00000           | .1465      | .1465  |
| 107-305500-16  | SOUND BYPASS CERAMIC FILTER 5.5MHZ SFE-5.5MB MURATA<br>CF001        | PC   | 0    | 1.00000           | .1465      | .1465  |
| 107-305740-16  | SOUND BYPASS CERAMIC FILTER 5.74MHZ SFE-5.74MB MURATA<br>CF101      | PC   | 0    | 1.00000           | .3600      | .3600  |
| 107-306000-16  | SOUND BYPASS CERAMIC FILTER 6.0MHZ SFE-6.0MB MURATA<br>CF003        | PC   | 0    | 1.00000           | .1588      | .1588  |
| 107-731500-00  | SAW FILTER TSB-5308U (SANYO)<br>SA102                               | PC   | 0    | 1.00000           | 1.3322     | 1.3322 |
| 107-738916-00  | SAW FILTER TSP-5315 SANYO<br>SA101                                  | PC   | 0    | 1.00000           | 1.2487     | 1.2487 |
| 123-102350-90  | CERAMIC CAP. 0.001 MFD 50V +-10% (B TYPE)<br>C103                   | PC   | 0    | 1.00000           | .0106      | .0106  |
| 123-222466-41  | CERAMIC CAP. 0.0022 MFD 400V +-20% ECK-DNS222MEX MATSUSHITA<br>C912 | PC   | 0    | 1.00000           | .2058      | .2058  |
| 160-103255-27  | PIN CONNECTOR 3 PINS PLUG<br>CN302                                  | PC   | 0    | 1.00000           | .0231      | .0231  |
| 171-550084-02  | 84" AC LINE CORD (END-CUT)SAA APPW/7.5A PLUG.                       | PC   | 0    | 1.00000           | .6154      | .6154  |
| 191-301300-07  | 3 PIN SOCKET ASS'Y L=40MM (HALF CIRCLE)<br>CN302 '1' & '3'          | PC   | 0    | 1.00000           | .0346      | .0346  |

ASSEMB PRICE : 14.3350

\*\* THIS SPARE LIST IS MADE FOR TECHNICAL / MAINTENANCE REFERENCE ONLY \*\*

Print Date : 26/11/94

PRODUCT CODE : 932074-E00001-AT

Page Number : 3

DESCRIPTION : 9320G-2 PAL/BG W/SCART/STEREO/OPTIONAL M.BLK 240V SAA "TEAC"

| Component Part  | Description / Location                                     | Unit | Subs | Quantity Required | Unit Price | Amount |
|---|--|------|------|-------------------|------------|--------|
| *** ASSEMBLY : 155-000400-05-02 NON-COM PART HANDSET ASS'Y (FTT/STEREO) |  |      |      |                   |            |        |
| 514-200407-10   | SELF-TAPPING SCREW 2 X 7 B/T (HARDEN)<br>FOR HANDSET       | PC   | 0    | 1.00000           | .0019      | .0019  |
| 516-260408-10   | SELF-TAPPING SCREW 2.0 X 8 P/T(HARDEN)<br>FOR HANDSET      | PC   | 0    | 2.00000           | .0017      | .0034  |
| 849-931301-00   | CONTACT RUBBER KEY PAD                                     |      | 0    | 1.00000           | .5577      | .5577  |
| 889-931310-00   | HANDSET COVER PLATE<br>FOR W/O LCD REMOTE                  |      | 0    | 1.00000           | .0115      | .0115  |
| 892-931308-04   | DIAL KEY PLATE-ENG SID W/TEAC LOGO(FIT/ST.)38 KEYS W/O LCD |      | 0    | 1.00000           | .2038      | .2038  |
| 900-931310-01   | HANDSET TOP CABINET - MOULDED BLACK                        |      | 0    | 1.00000           | .2298      | .2298  |
| 902-931310-01   | HANDSET BOTTOM CABINET - MOULDED BLACK                     |      | 0    | 1.00000           | .1740      | .1740  |
| 910-931301-01   | BATTERY DOOR - BLACK MOULDED                               |      | 0    | 1.00000           | .0392      | .0392  |
| ASSEMB PRICE :  |  |      |      |                   |            | 1.2215 |

\*\* THIS SPARE LIST IS MADE FOR TECHNICAL / MAINTENANCE REFERENCE ONLY \*\*

Print Date : 26/11/94

PRODUCT CODE : 932074-E00001-AT

Page Number : 2

DESCRIPTION : 9320G-2 PAL/BG W/SCART/STEREO/OPTIONAL M.BLK 240V 5AA "TEAC"

| Component Part   | Description / Location   | Unit | Subs | Quantity Required | Unit Price | Amount |
|--|--|------|------|-------------------|------------|--------|
| *** ASSEMBLY : 155-000400-06-00 COMMON PART FOR HANDSET ASS'Y (R/C 9313) |  |      |      |                   |            |        |
| 107-800455-46  | 455K HZ RESONATOR CSB455EB MURATA<br>CF701   | PC   | 0    | 1.00000           | .1980      | .1980  |
| 113-101005-17  | CARBON FILM RESISTOR 100 OHM 1/16W +-5%<br>R704,705  | PC   | 0    | 2.00000           | .0044      | .0088  |
| 113-102005-17  | CARBON FILM RESISTOR 1K OHM 1/16W +-5%<br>R705   | PC   | 0    | 1.00000           | .0044      | .0044  |
| 113-103005-17  | CARBON FILM RESISTOR 10K OHM 1/16W +-5%<br>R702  | PC   | 0    | 1.00000           | .0044      | .0044  |
| 113-109005-17  | CARBON FILM RESISTOR 1 OHM 1/16W +-5%<br>R708,710  | PC   | 0    | 2.00000           | .0044      | .0088  |
| 113-479005-17  | CARBON FILM RESISTOR 47K OHM 1/16W +-5%<br>R703  | PC   | 0    | 1.00000           | .0044      | .0044  |
| 113-682005-17  | CARBON FILM RESISTOR 6.8K OHM 1/16W +-5%<br>R701   | PC   | 0    | 1.00000           | .0044      | .0044  |
| 127-478042-08  | ELECT. CAP. 47 MFD 16V +-20%<br>C701   | PC   | 0    | 1.00000           | .0288      | .0288  |
| 139-600101-00  | INFRARED EMITTER EL-101 KODENSHI<br>LED701   | PC   | 0    | 1.00000           | .1340      | .1340  |
| 131-210719-29  | TRANSISTOR 2SA719R/S MATSUSHITA<br>Q702  | PC   | 0    | 1.00000           | .0633      | .0633  |
| 131-230945-00  | TRANSISTOR 2SC945 NEG<br>Q701  | PC   | 0    | 1.00000           | .0417      | .0417  |
| 133-003010-33  | I.C. 8AA3010T PHILIPS<br>IC701   | PC   | 0    | 1.00000           | .7500      | .7500  |
| 172-626006-42  | UL 1007 TOP COAT WIRE AWG 26 60MM RED 10 X 10 MM<br>FROM REMOTE PCB '3V' TO BATTERY CONTACT PLATE '+'    | PC   | 0    | 1.00000           | .0017      | .0017  |
| 172-626008-40  | UL 1007 TOP COAT WIRE AWG 26 80MM BLACK 10 X 10 MM<br>FROM REMOTE PCB 'GND' TO BATTERY CONTACT PLATE '-' | PC   | 0    | 1.00000           | .0022      | .0022  |
| 172-726000-99  | BARE WIRE 54MM<br>W701-702   | M    | 0    | .11000            | .0092      | .0010  |
| 190-931302-02  | REMOTE P.C.B.  | PC   | 0    | 1.00000           | .5346      | .5346  |
| 773-036864-00  | BATTERY CONTACT PLATE +VE  |      | 0    | 1.00000           | .0173      | .0173  |
| 773-222001-00  | BATTERY CONTACT PLATE (+VE,-VE) W/NICKEL PLATING   |      | 0    | 1.00000           | .0365      | .0365  |
| 774-036862-00  | BATTERY CONTACT SPRING -VE   |      | 0    | 1.00000           | .0260      | .0260  |
| 964-931301-00  | SENSOR LENS  |      | 0    | 1.00000           | .0275      | .0275  |

ASSB PRICE : 1.8979

Print Date : 25/11/84  
Page Number : 1

67-443/94  
CTM487

<< B.O.M. PRICE LIST FOR CUSTOMER >> - CURRENCY (USD)

PRODUCT CODE : 932074-E00001-AT  
DESCRIPTION : 9320C-2 PAL/BG W/SCART/STEREO/OPTIONAL M.BLK 240V SAA "TEAC"

| ASSEMBLY NUMBER  | DESCRIPTION                              |
|------------------|--|
| 155-000400-06-00 | COMMON PART FOR HANDSET ASS'Y (R/C 9313) |
| 155-000400-06-02 | NON-COM PART HANDSET ASS'Y (FTT/STEREO)  |
| 158-932074-E0-A1 | NON-COMMON PART FOR CHASSIS ASS'Y (BG)   |
| 150-932074-E8-A0 | COM PART FOR CHASSIS ASS'Y (BG) "CHU322" |
| 159-932074-E0-A0 | COMMON PART FOR CASING ASS'Y (BG)        |
| 159-932074-E0-A2 | NON-COMMON PART FOR CASING ASS'Y (M.BLK) |
| 161-000000-00-01 | NON-COM PART FOR GER STEREO ASS'Y        |
| 163-932074-E0-A2 | NON-COMMON PART FOR PACKING ASS'Y (BG)   |

\*\* THIS SPARE LIST IS MADE FOR TECHNICAL / MAINTENANCE REFERENCE ONLY \*\*

